

Hydro-line and Pole Locations

Burlington Quarry Extension

Part Lots 1 & 2, Concession 2
 Part Lots 17 & 18, Concession 2 NDS
 Geographic Township of Nelson
 City of Burlington
 Region of Halton

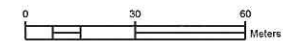
Legend

- Licence Boundary
- Limit of Extraction
- Acoustic / Visual Berm
- Parcel Fabric
- Burlington Hydro - Primary Conductor
- Burlington Hydro - Secondary Conductor
- Burlington Hydro - Underground Trench
- h/P
P35972 Burlington Hydro - Pole Number
- Pole From Base Mapping
- Quarry Entrance / Exit (white)

Date June 2022

Sources Air photo from Microsoft Bing, date unknown
 Primary and secondary conductor as well as underground trench location area from Burlington Hydro, Data received April 14, 2022.

Scale - 1:2000



N:\Barr\191330-Nelson - Project Sideways\Drawings\Figures\Hydro Line Locations - June 2022\CAD\191330 - Hydro Line and Pole Locations.dwg