

Figure 1 Acton Water and Wastewater Infrastructure

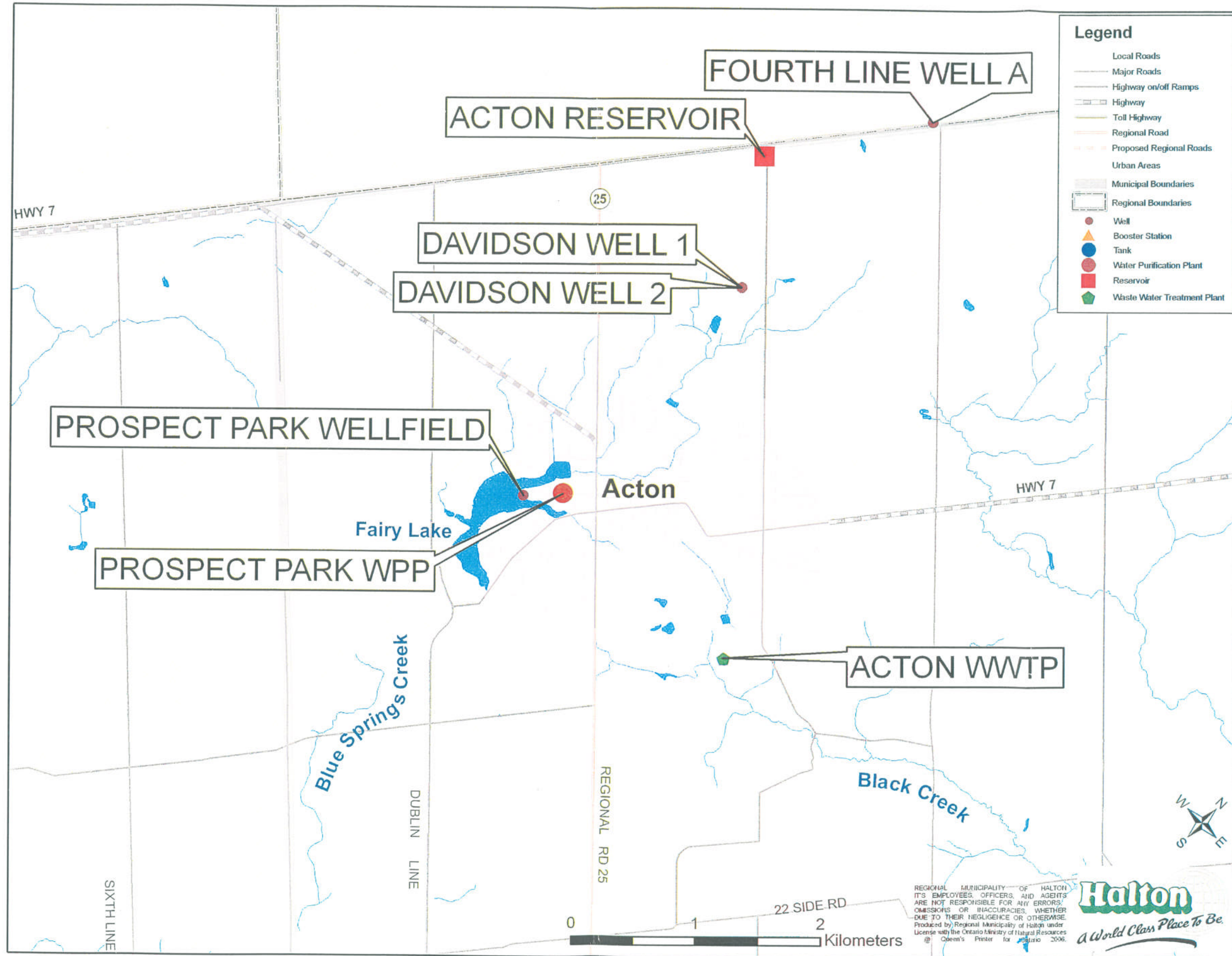
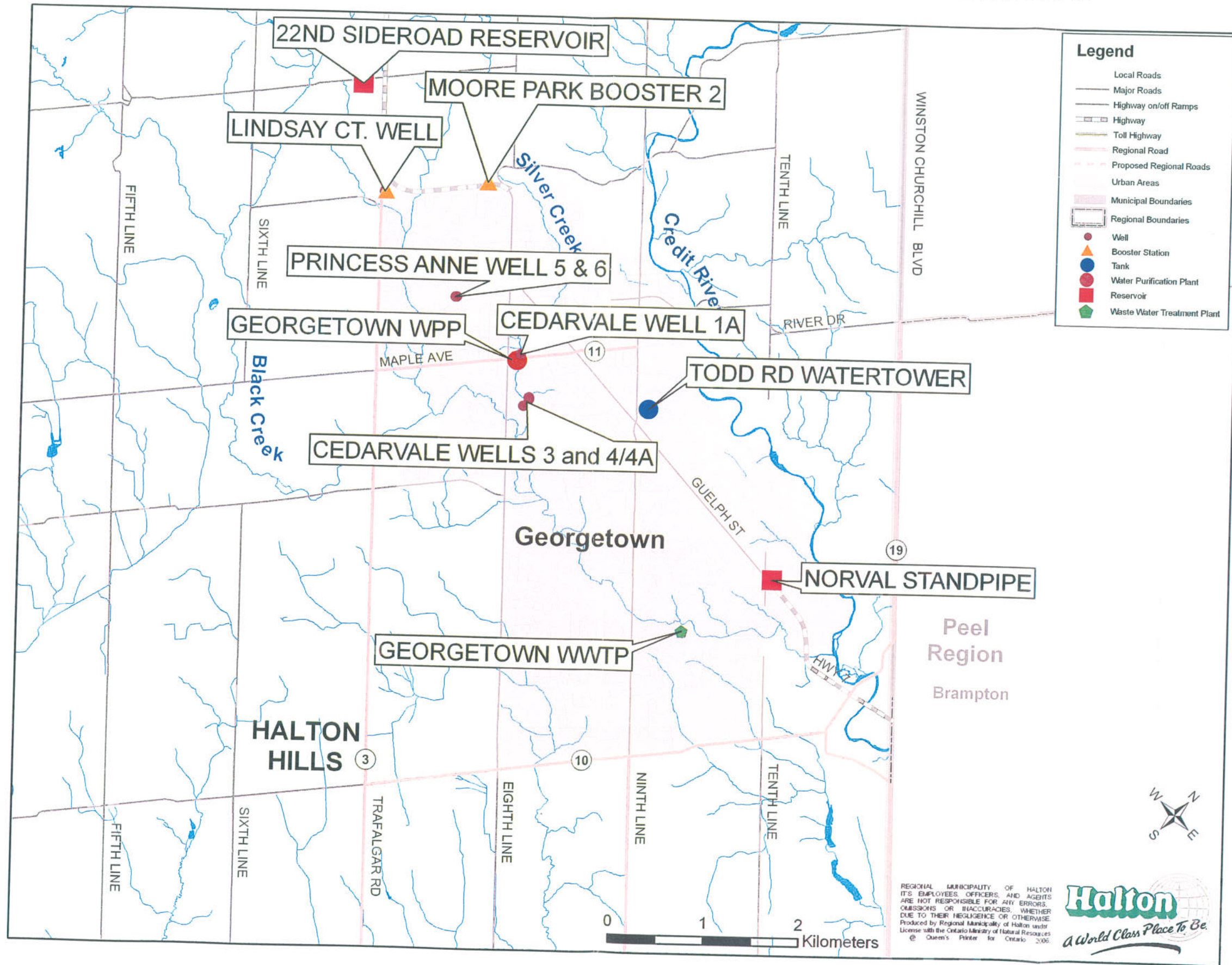
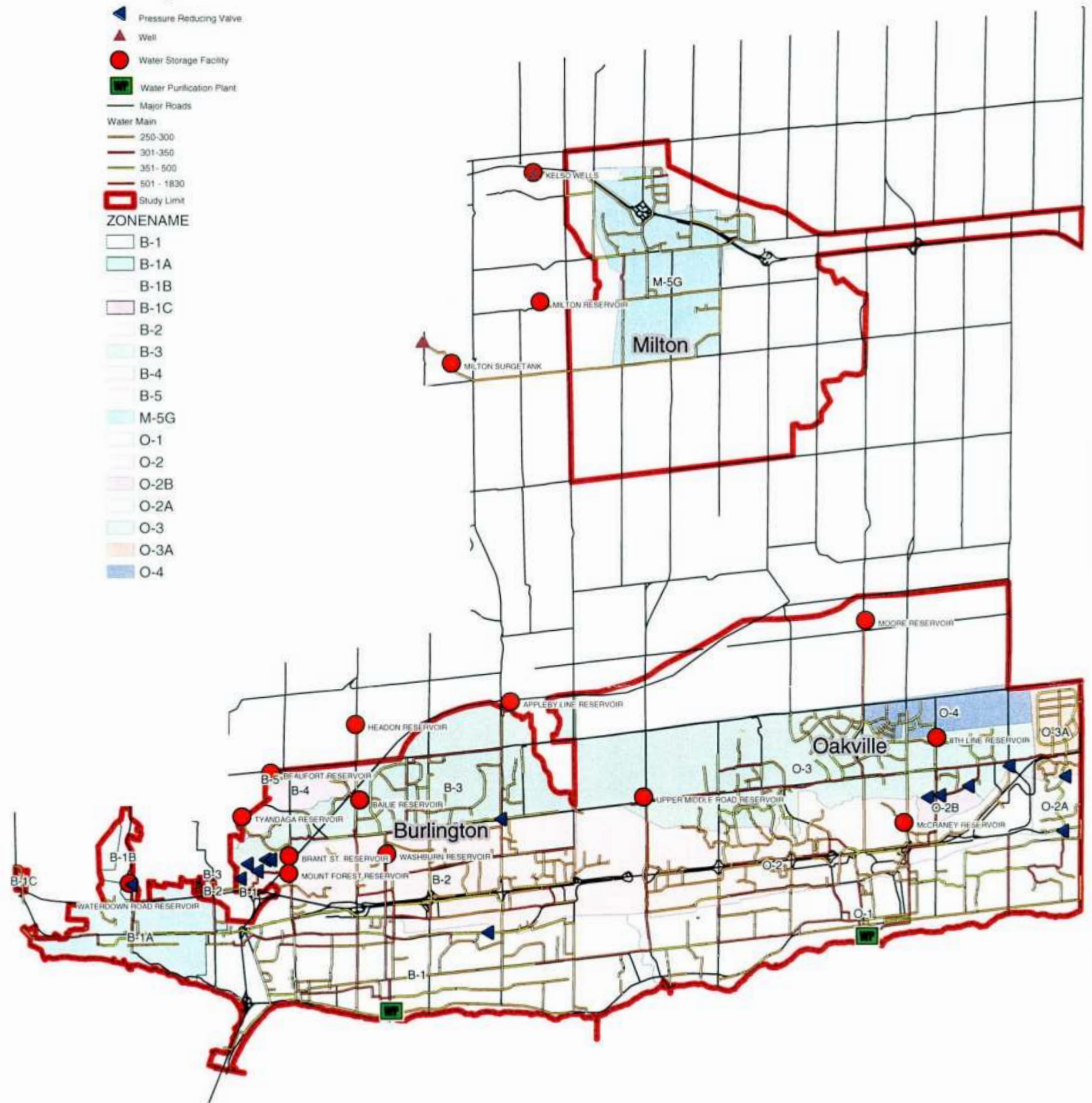


Figure 2 Georgetown Water and Wastewater Infrastructure

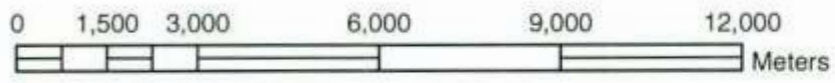
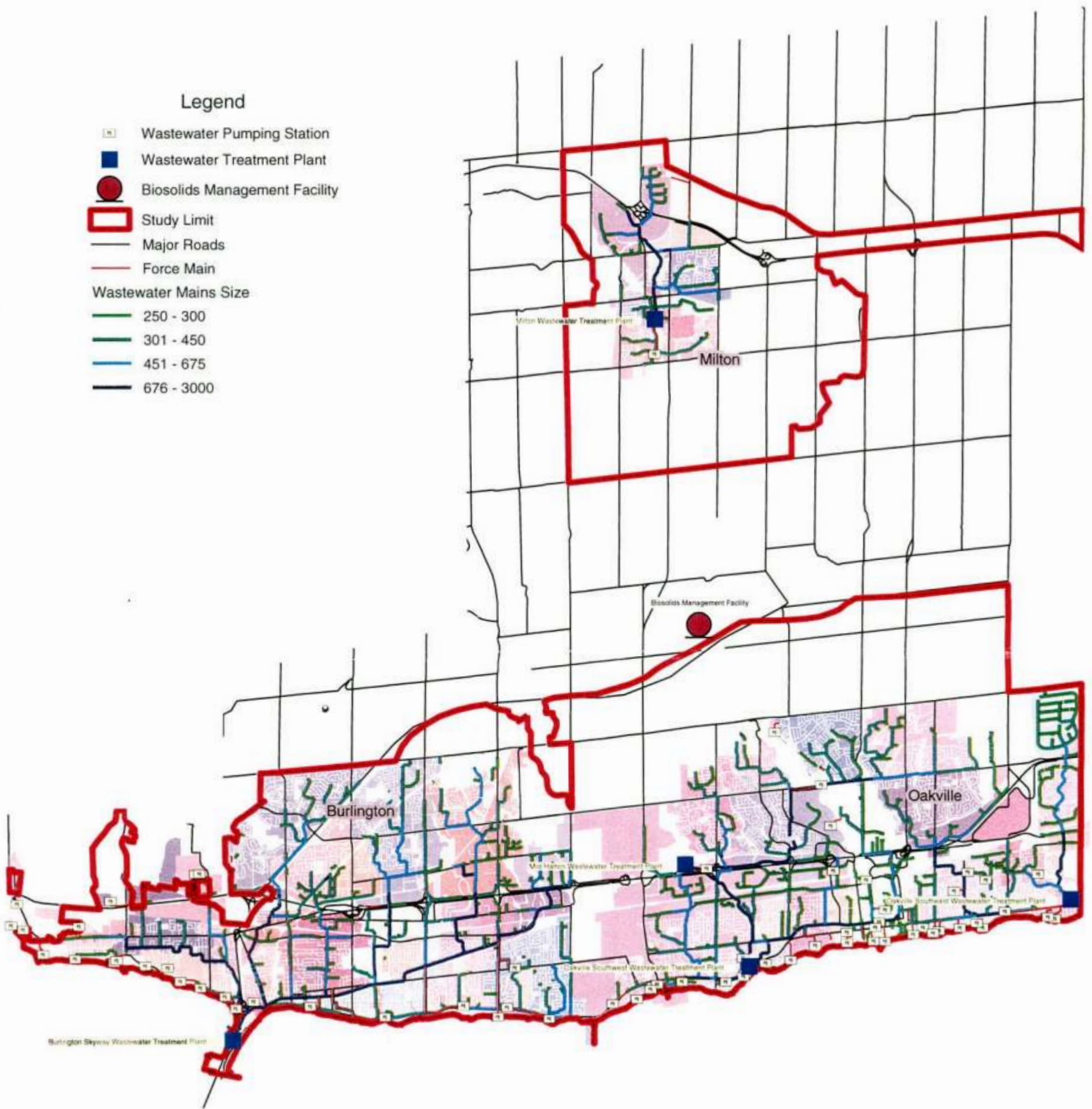


- Legend**
- Pressure Reducing Valve
 - Well
 - Water Storage Facility
 - Water Purification Plant
 - Major Roads
 - Water Main**
 - 250-300
 - 301-350
 - 351-500
 - 501-1830
 - Study Limit
 - ZONENAME**
 - B-1
 - B-1A
 - B-1B
 - B-1C
 - B-2
 - B-3
 - B-4
 - B-5
 - M-5G
 - O-1
 - O-2
 - O-2B
 - O-2A
 - O-3
 - O-3A
 - O-4





	Master Plan Review Study Area	KMK CONSULTANTS LIMITED 220 ADVANCE BOULAVARD BRAMPTON, ONTARIO L6T 4J5		
	Figure 6.4 Existing Water System Network and Pressure Zones	SCALE:	PROJECT No:	DRAWING No:
		1:120,000	2188 Cat. 12	
		PRODUCED BY: 4DM 4850 Keele Street Toronto, Ontario M3J 3K1 WWW.4DM-INC.COM		

- Legend**
-  Wastewater Pumping Station
 -  Wastewater Treatment Plant
 -  Biosolids Management Facility
 -  Study Limit
 -  Major Roads
 -  Force Main
- Wastewater Mains Size**
-  250 - 300
 -  301 - 450
 -  451 - 675
 -  676 - 3000



NORTH AMERICAN DATUM 1983
UNIVERSAL TRANSVERSE MERCATOR
Zone 17



	Master Plan Review Study Area	 KMK CONSULTANTS LIMITED 220 ADVANCE BOULVARD BRAMPTON, ONTARIO L6T 4J5		
	Figure 7.7 Existing Wastewater System Network and Drainage Area	SCALE: 1:120,000	PROJECT No: 2188 Cat. 12	DRAWING No:
		PRODUCED BY: 