



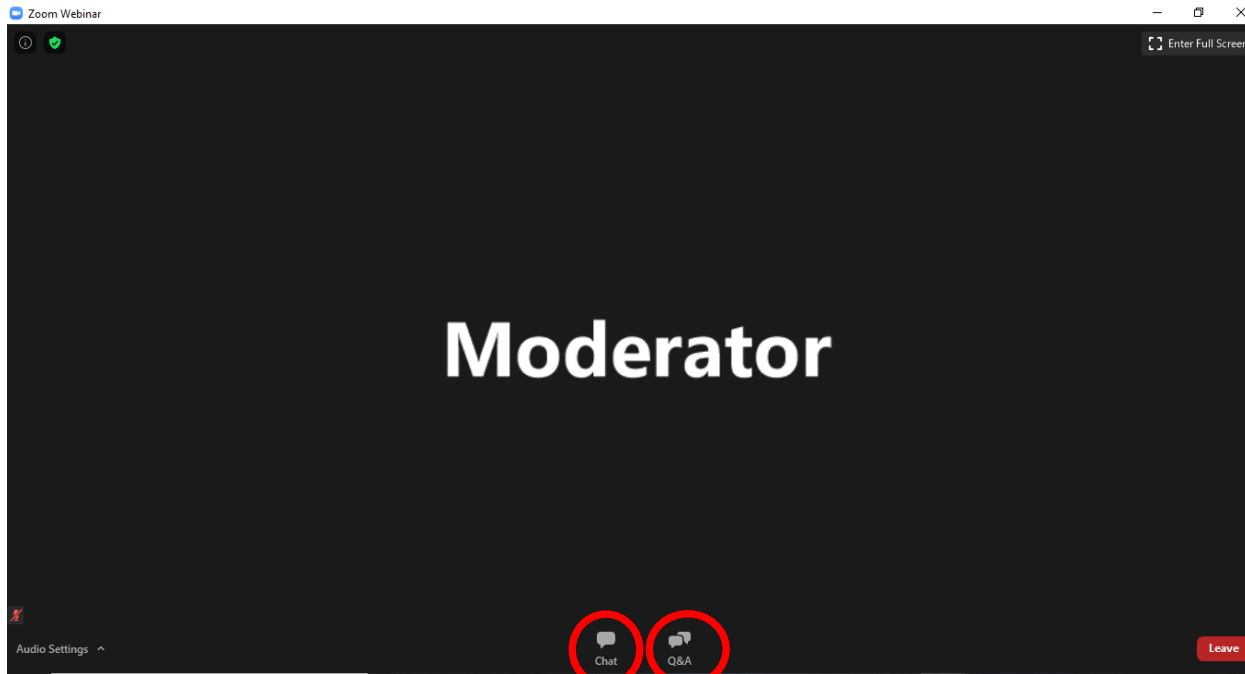
Welcome!

Regional Official Plan Review North Aldershot Planning Area Public Information Session

We look forward to hearing from you!

Zoom Meeting Functions - Attendees

Personal Computer

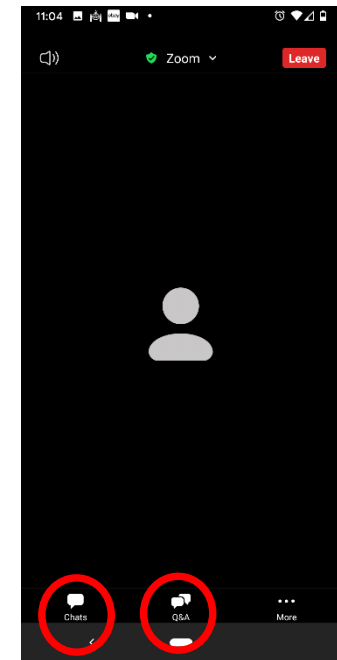


Disabled

Write a Question

If you're having technical problems, please communicate with our hosts using the Q&A Icon or contact ROPR@halton.ca.

Smart Phone



Disabled

Write a Question



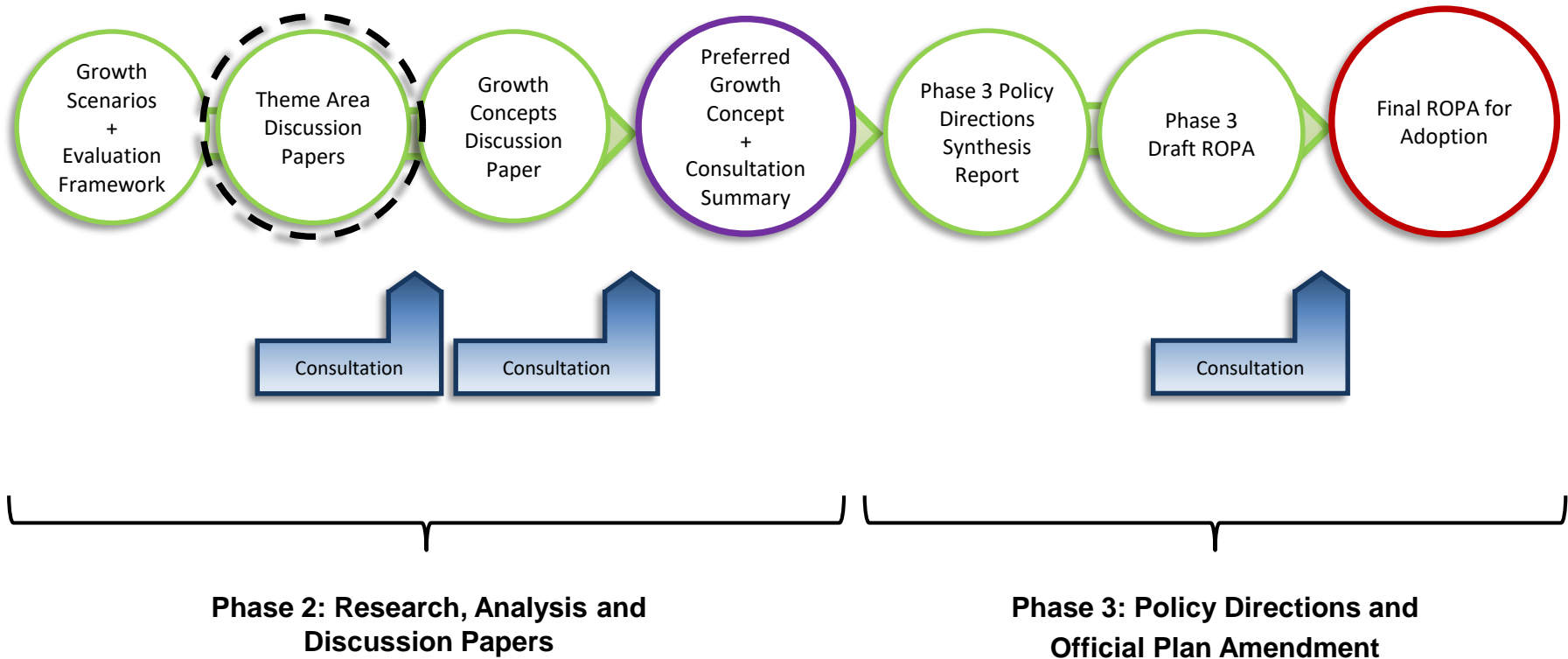
Regional Official Plan Review: North Aldershot Public Information Centre



Virtual PIC
Sept.9, 2020



Current Regional Official Plan Review Status



Community Engagement

Virtual Public Information Centres (Start at 7pm):

- Sept. 3 – Climate Change (*completed*)
- Sept. 9 – North Aldershot Planning Area
- Sept. 10 – Regional Urban Structure / Integrated Growth Management Strategy
- Sept. 17 – Agricultural and Rural System and Natural Heritage System

Website: www.halton.ca/ropr

- Download the 5 Discussion Papers
- Complete Questionnaires

Email: ropr@halton.ca

Telephone: 311



Participant Poll #1

Where do you live in Halton Region?

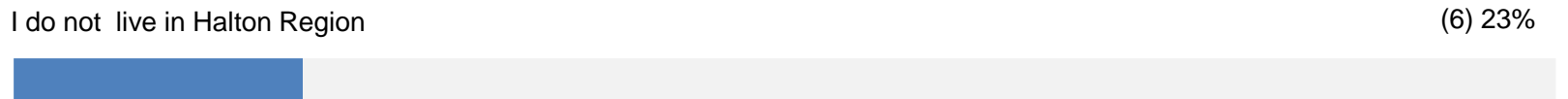
- a) North Aldershot
- b) Outside North Aldershot, but a Burlington resident
- c) Milton, Halton Hills, or Oakville
- d) I do not live in Halton Region

What best describes your relationship with Halton Region?

- a) Resident
- b) Business Owner
- c) Member of the Development/Building Industry
- d) Non-Governmental Organization
- e) Local Municipal Government Partner
- f) Other

Participant Poll #1 - Results

Where do you live in Halton Region?

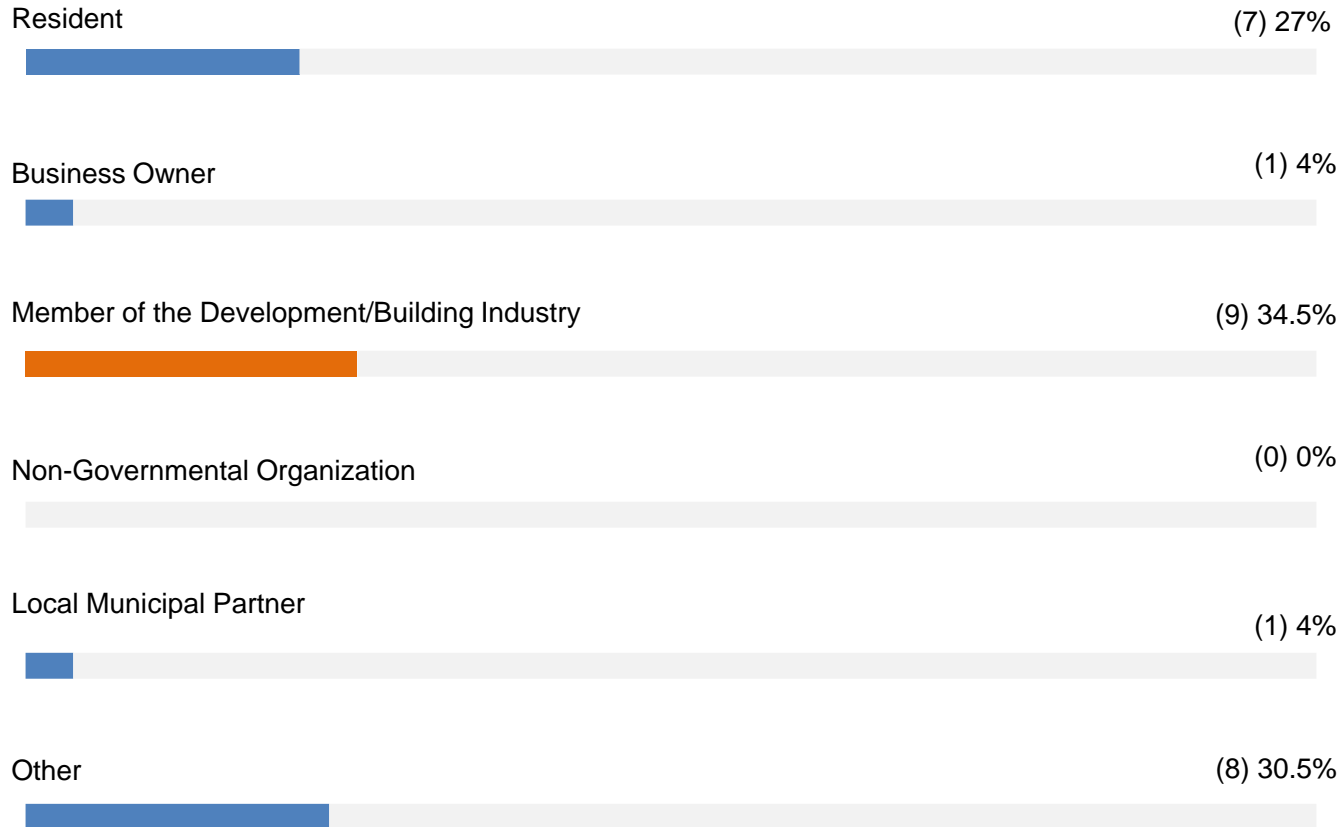


(26 of 26 Votes) 100%
Values rounded



Participant Poll #1 - Results

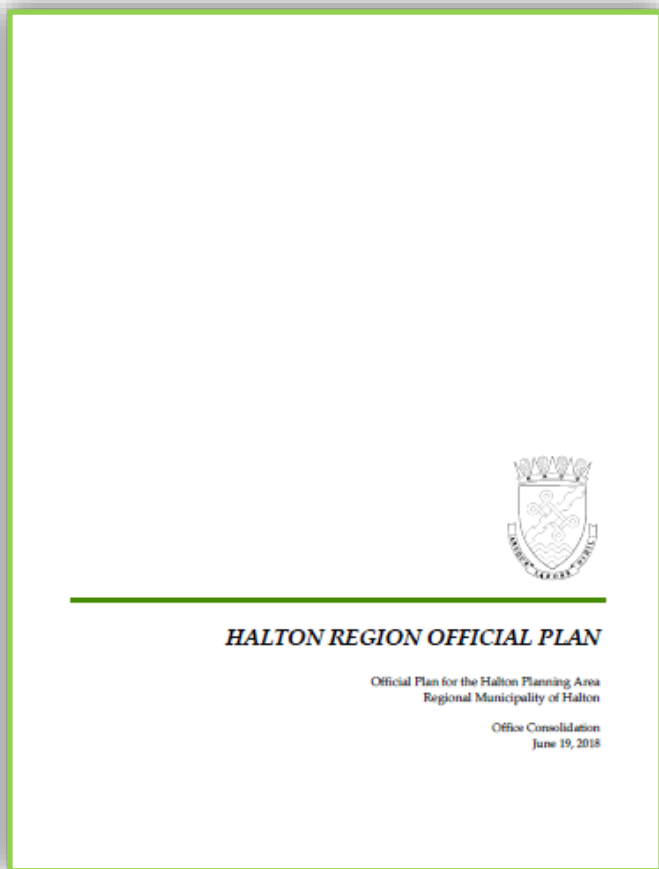
What best describes your relationship with Halton Region?



(26 of 26 Votes) 100%
Values rounded

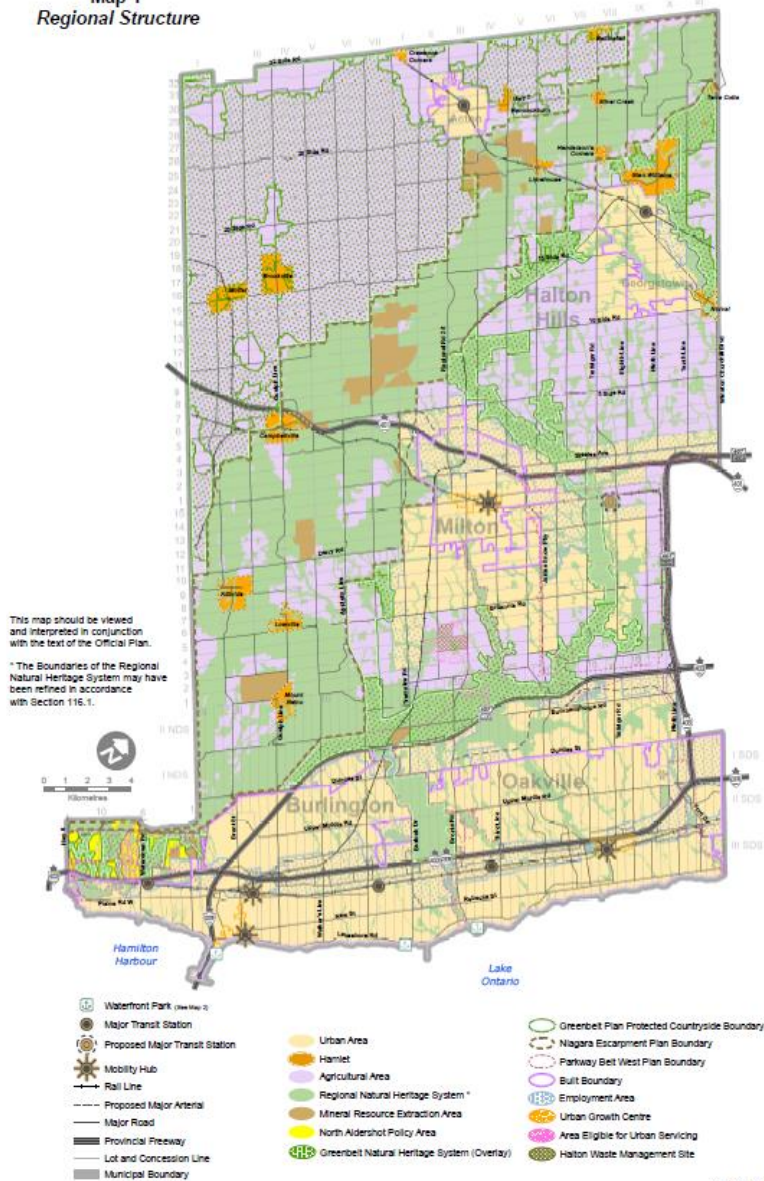


What is the Regional Official Plan?



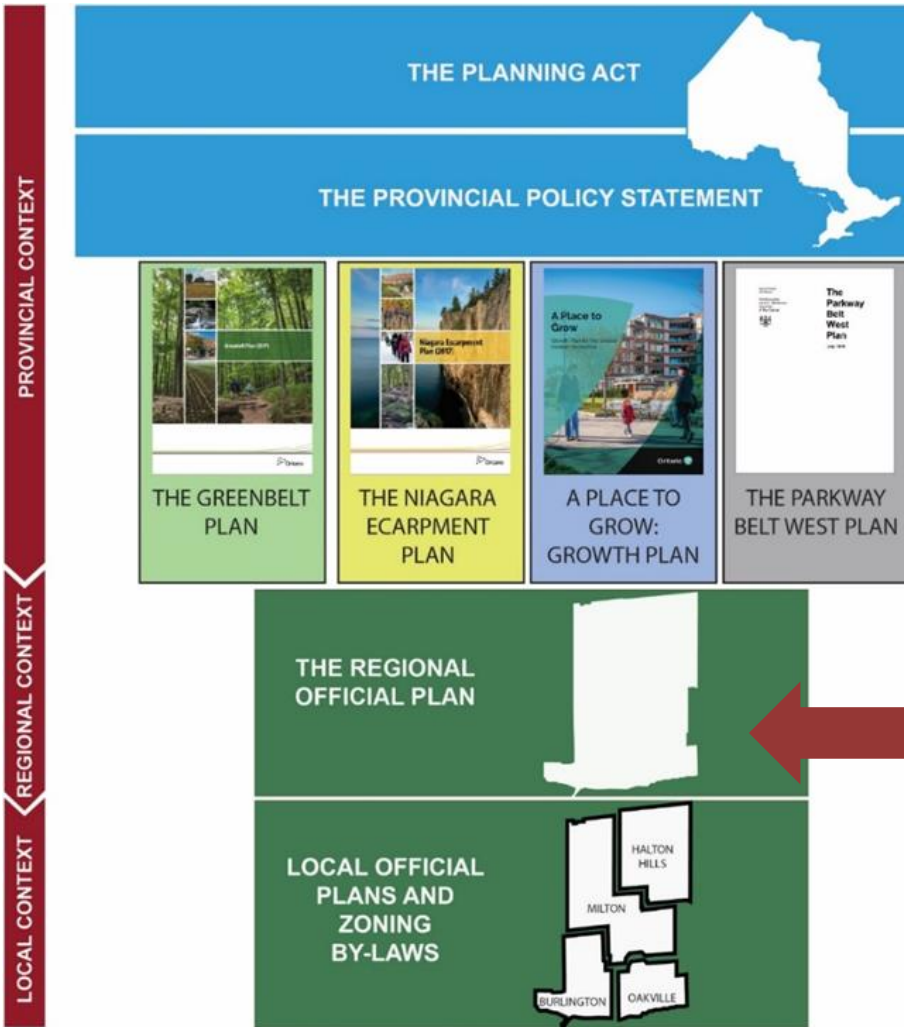
- Adopted by Council
- Long term Vision for Halton's physical form and community character
- Delivery of Regional services and responsibilities as set out in Planning Act, Municipal Act and other Provincial legislation

Map 1
Regional Structure



- Regional Structure implements Halton's land use planning vision
- Settlement Areas, Agricultural System, Natural Heritage System
- Provincial Plan Areas
- Province requires Halton to designate lands for future growth

Why Review the Regional Official Plan?



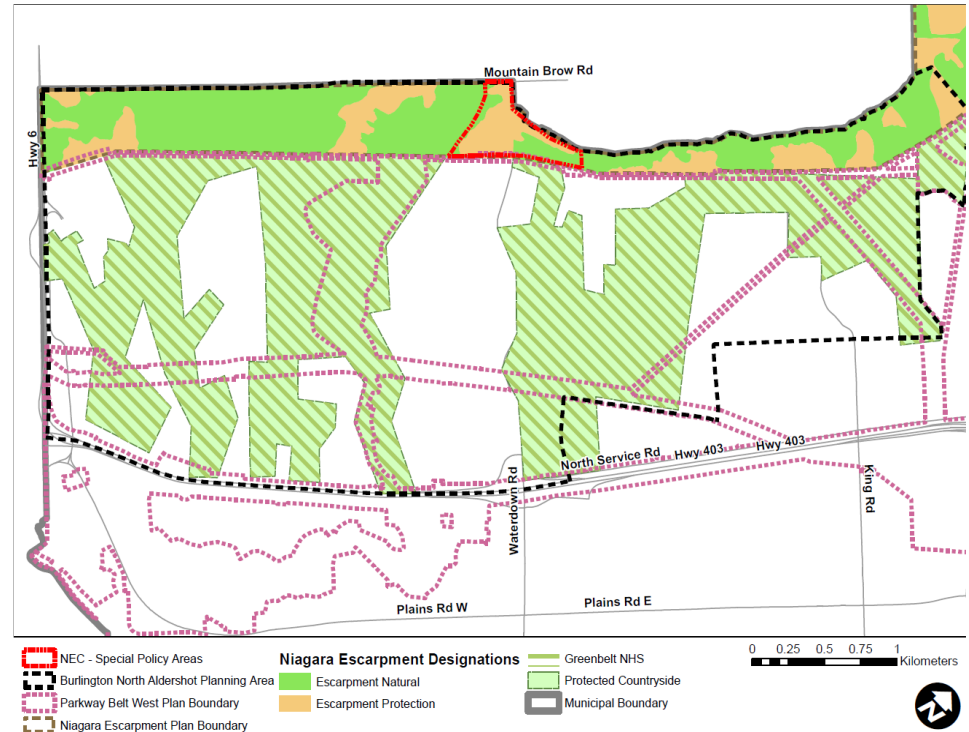
- The public plays an important role in the land use planning process.
- Your input helps Council make better decisions that affect your future.



Provincial Policy Context

North Aldershot Review

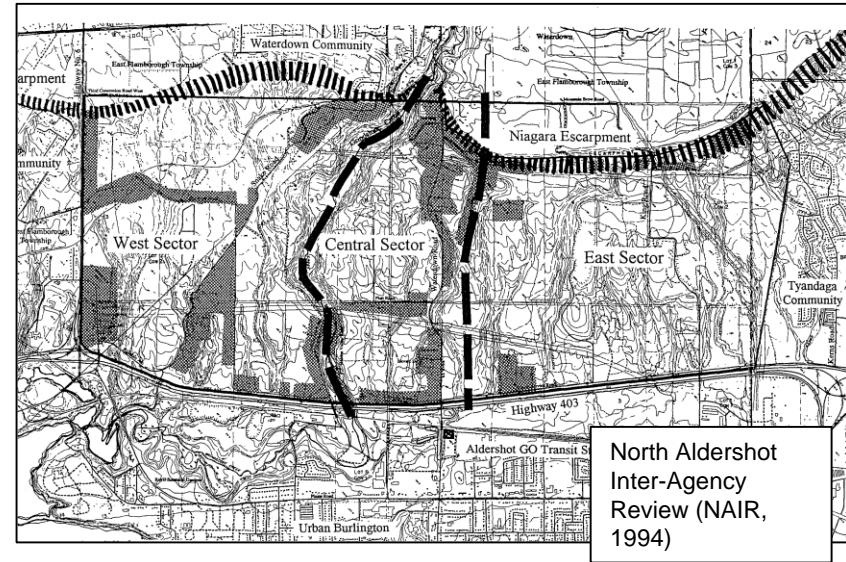
- Total Planning Area of North Aldershot is 1,365.30 hectares
- Approx. 75% of lands impacted by the policies of the Parkway Belt West Plan, the Niagara Escarpment Plan and the Greenbelt Plan.
- The policy framework of the Provincial Policy Statement, 2020 and the Growth Plan, 2019 apply to the entire area.



Background

North Aldershot Review

- Special Policy framework based on unique character, open space and NHS attributes.
- Predates last two Official Plan reviews and all current Provincial Plans and mapping.
- Region must review North Aldershot policies to ensure consistency and conformity to updated Provincial Policy Statement, Provincial Plans and mapping.



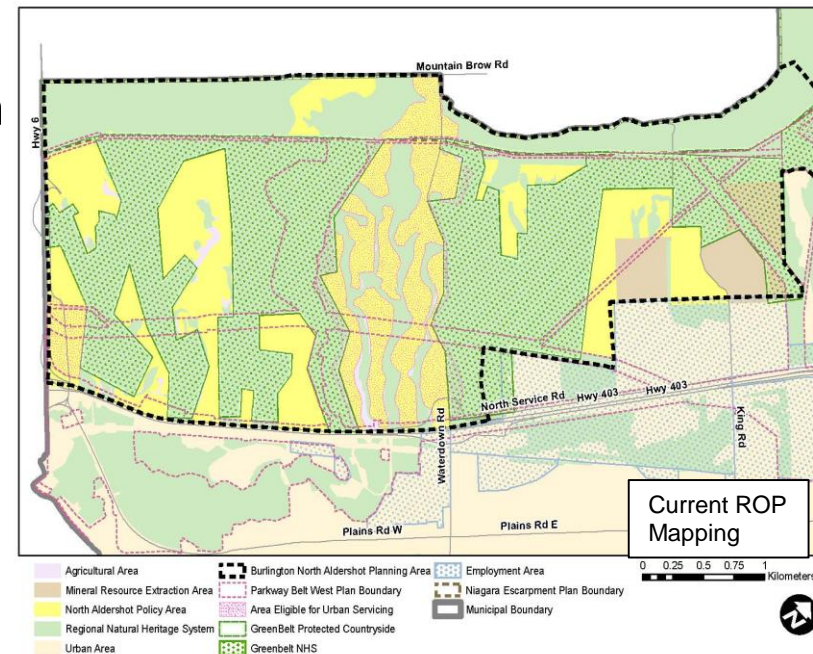
Current Regional Official Plan North Aldershot Review

- Current Regional Official Plan Objectives:
 - *Recognize and maintain the distinct and unique character of the North Aldershot area within the context of the surrounding built-up area; and,*
 - *Provide for a limited amount of development in certain locations while preserving significant natural areas and maintaining the predominantly rural and open space character of the landscape.*

- Mutually Exclusive Land Use designation

- Policies provide for a range of limited uses in a number of land use designations that are unique to North Aldershot

- Identifies areas eligible for Urban Services subject to specific criteria



Considerations to Update Framework

Key drivers:

1. Provincial mapping of Natural Heritage System for the Growth Plan.
2. Defining rural areas as per the Growth Plan.
3. Accommodation and Form of Growth per Provincial Policy



Participant Poll #2

What are your interests in the North Aldershot Planning Area? (Multiple Choice)

- a) Growth and Development
- b) Impacts on the Rural area
- c) Interest in protection of Cootes to Escarpment Ecopark
- d) Environmental Protection and the Natural Heritage System
- e) All of the above

Participant Poll #2 - Results

What are your interests in the North Aldershot Planning Area? (Multiple Choice)



(38 of 38 Votes) 100%
Values rounded





Natural Heritage

Phase 2 Discussion Paper

Evolution of the Natural Heritage System



ESAs - 1980



Greenlands System - 2006







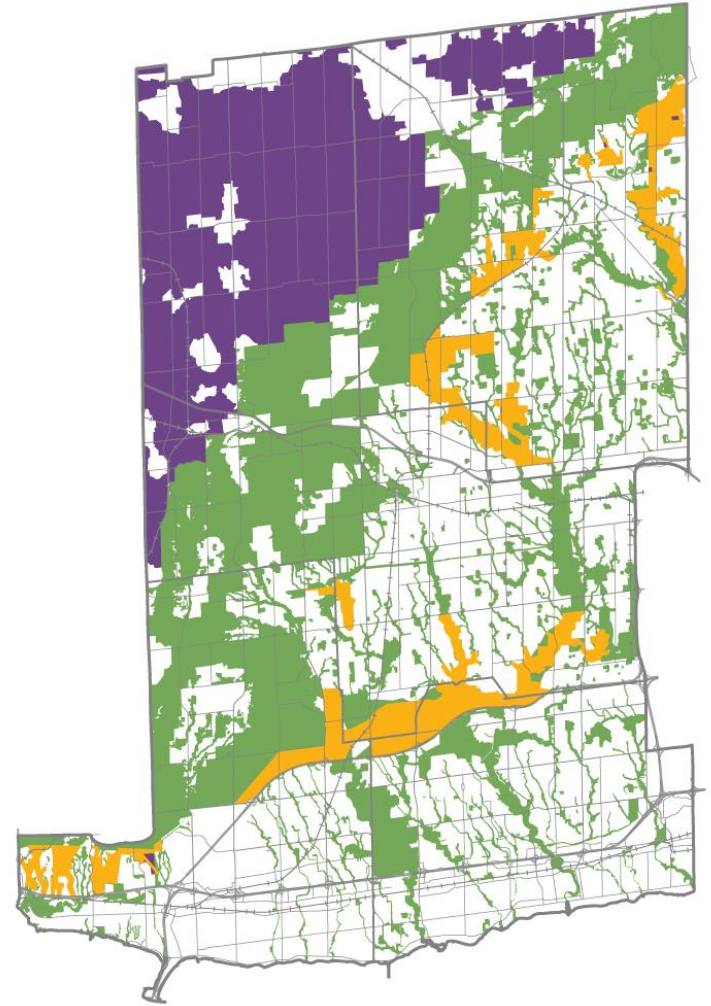
Halton's NHS - 2009



Current Natural Heritage System Framework

Which Policies Apply Where?

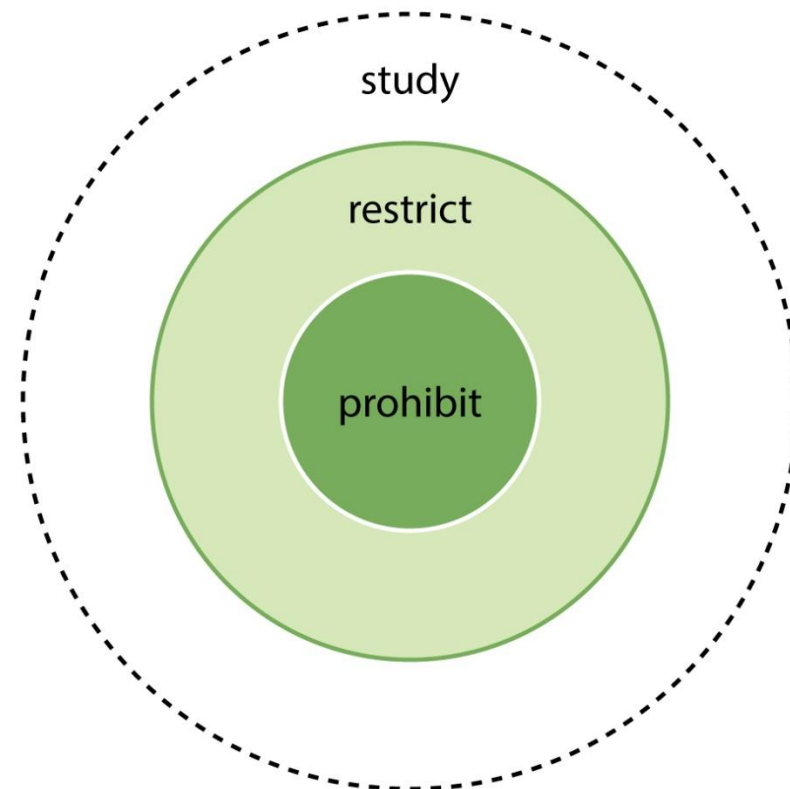
-  • **Greenbelt NHS** policies apply north of the NEPA
-  • **Regional NHS** policies apply within and south of the NEPA
-  • In **overlapping area**, RNHS policies apply except where GBNHS is more restrictive.
-  • Key Features policy (s. 139.12) applies throughout the Region



Current Natural Heritage System General Implementation

General Approach

- The NHS is implemented through:
 - prohibiting or restricting *development* and *site alteration* within and adjacent to the NHS; and
 - triggering an Environmental Impact Assessment (EIA), Sub-Watershed Study (SWS) or similar studies for *development* and *site alteration* within or adjacent to the NHS.
- The applicable policy framework depends on location within the NHS.



Regional Natural Heritage System Key Features (s. 115.3(1) & Map 1G)

Key Features (Mapped)

Significant Woodlands



Image Source:
<https://oakvillegreen.org/natural-heritage-system-planning-in-halton-region-research-study/>

Significant Coastal Wetlands



Image Source:
<https://ontariohiking.com/sixteen-mile-creek-trail-oakville/>

Significant ANSIs



Image Source:
<https://www.heritagetrust.on.ca/en/index.php/properties/yaremko-ridley-property>

Significant Wetlands



Image Source:
Conservation Halton Loyalist Woods Forest & Wetland Restoration Project Fact Sheet

Fish Habitat



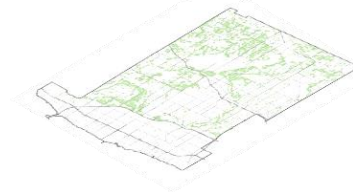
Image Source:
Conservation Halton Kelso Quarry Lake Fish Habitat Creation Restoration Project Fact Sheet

Key Features

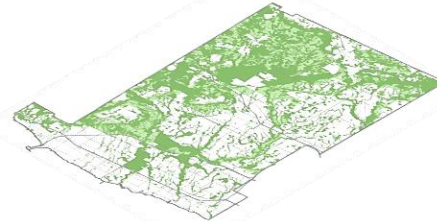


+

Areas Outside the Key Features



=



Map 1G

Key Features (Not Mapped)

Significant Habitat of Endangered and Threatened Species



Image Source:
<https://www.ontario.ca/page/jefferson-salamander-recovery-strategy>

Significant Valleylands



Image Source:
<https://www.letstalkhaltonhills.ca/11160/widgets/61513/documents/37259/download>

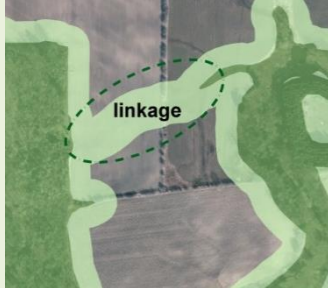

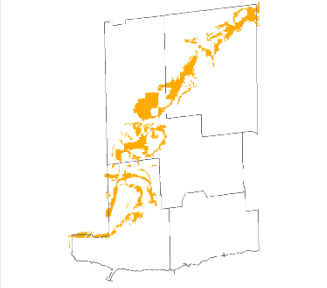
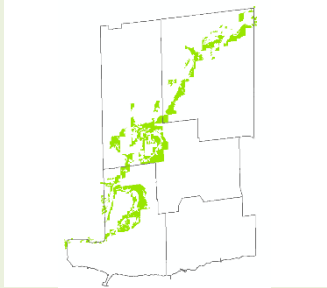


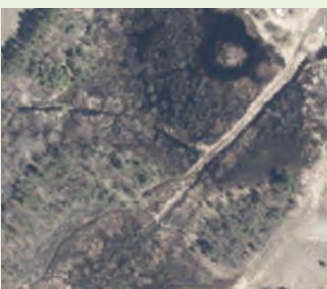

Significant Wildlife Habitat

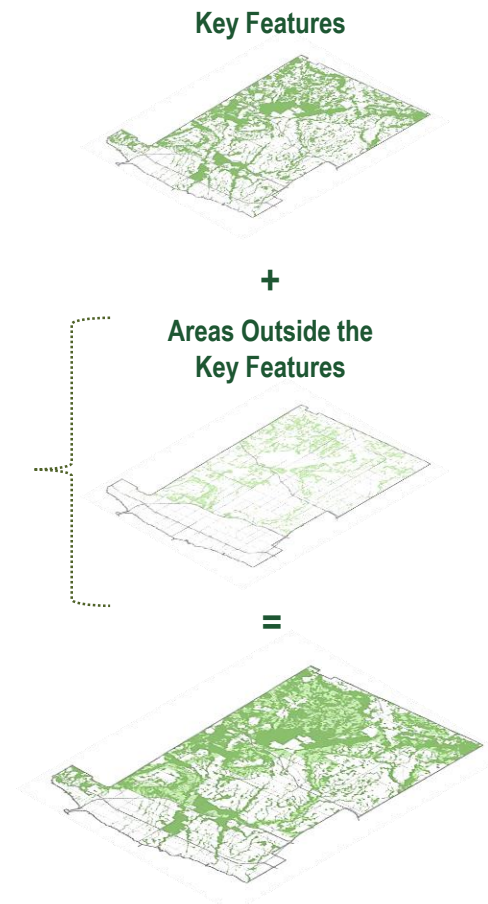


Image Source:
https://hnpc.com/site/wp-content/uploads/2019/09/esquesing2019_54_1.pdf

Regional Natural Heritage System

Areas Outside the Key Features (s.115.3, 115.4 & Map 1G)

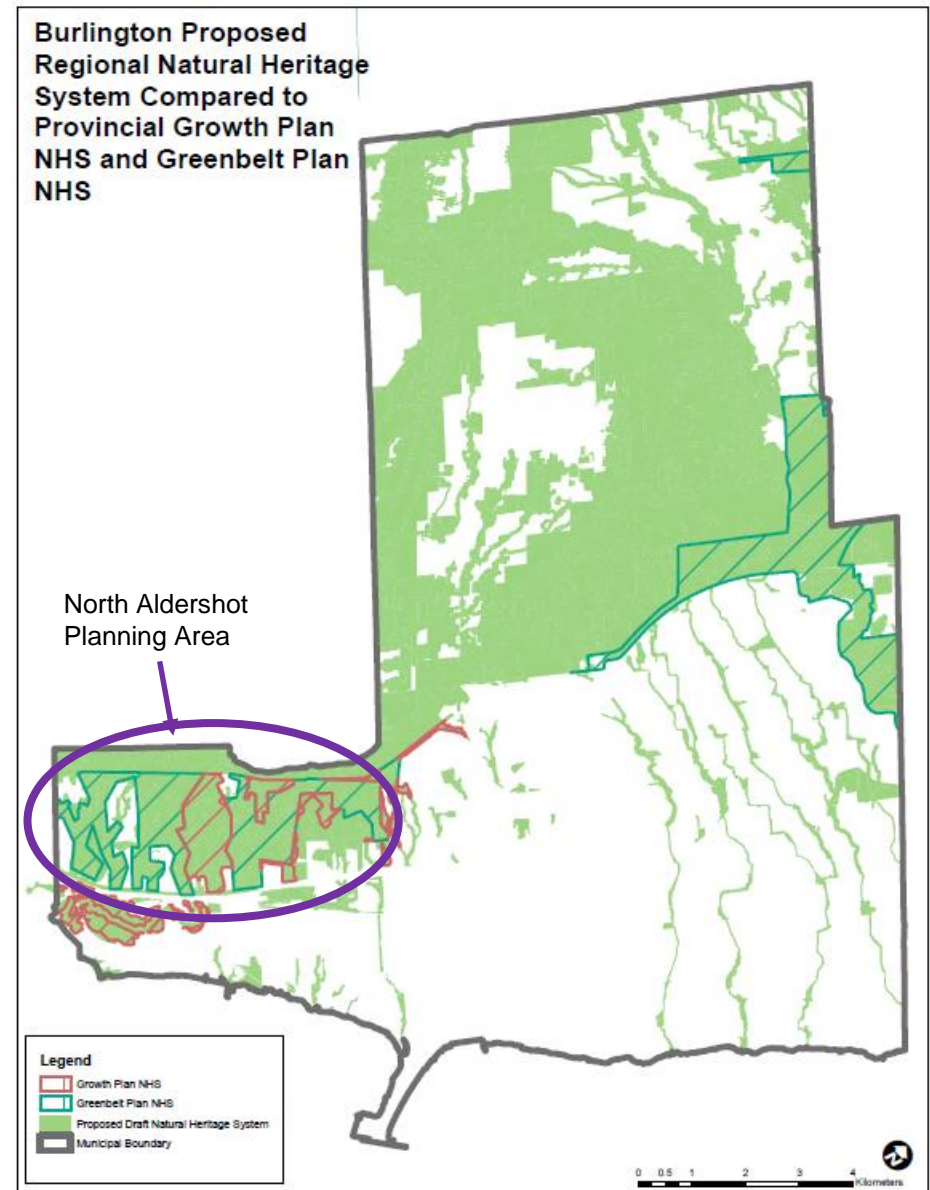
linkages	buffers	Escarpment Natural Area (NEP)	Escarpment Protection Area (NEP)
			
watercourses within a CA regulation limit	regulated flood plains determined by a CA	wetlands other than those considered significant	enhancements to the key features
			



Map 1G

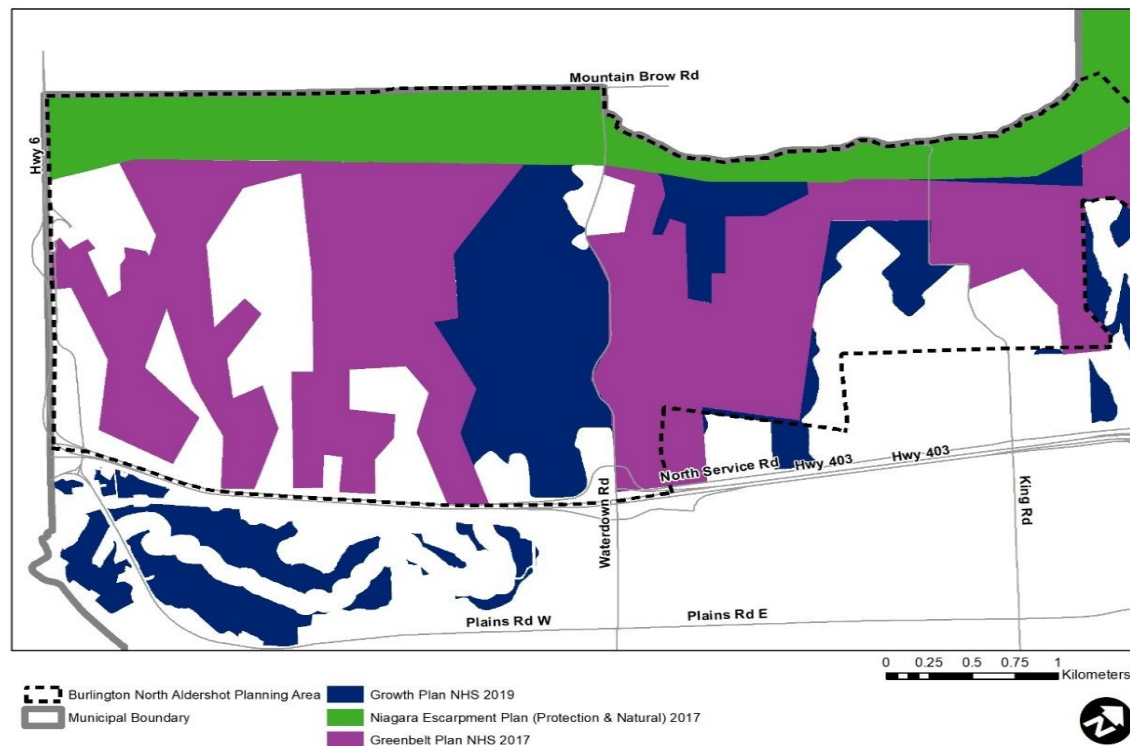
Mapping Updates Natural Heritage System

- Proposed refinements to NHS components to:
 - Better reflect provincial policies and guidelines to define the NHS;
 - Recognize Planning Act approvals and OMB Decisions;
 - Use of best available GIS base data information; and
 - Recognize Special Council Permits under Halton Tree-Bylaw and Staff On-site Refinements
- A Quality Assurance/Quality Control (QA/QC) evaluation of the proposed draft 2019 RNHS



Growth Plan Natural Heritage System North Aldershot Review

- Growth Plan, 2019 requirement to incorporate the Growth Plan Natural Heritage System in mapping and policy



Mapping Updates – North Aldershot

Natural Heritage System (s. 3.2 of Natural Heritage Discussion Paper and Technical Memos)

Provincial Growth Plan Requirements:

- GIS mapping from the Province
- Full extent of the Growth Plan Natural Heritage System reviewed
- No recommendations for refinements to Growth Plan NHS
- Implement through the Regional Official Plan policies and mapping

Regional Natural Heritage System Refinements:

- Mapped Key Features updated – base layer mapping from Province and Conservation Halton, aerial photo imagery
- Areas Outside of Key Features – linkages and enhancement areas reviewed

Policy Updates

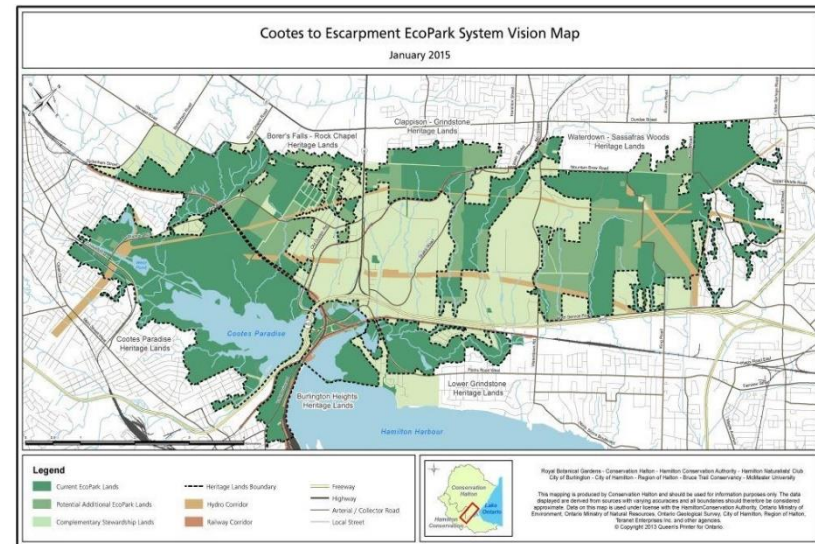
Natural Heritage

- Changes to the Provincial Policy Statement and Provincial Plans.
- Introduction of a Water Resource System
- Buffers and Vegetation Protection Zones.
- Natural Hazards
- Drinking Water Source Protection
- Improvement or clarification on some of the existing natural heritage policies have been identified.



Cootes to Escarpment (C2E) EcoPark System Natural Heritage

- There are no policies currently in the ROP that recognize the EcoPark System to support its vision and implement the Management Plans
- As part of the ROPR, the Region is considering:
 - Inclusion of policies to encourage recognition of the C2E EcoPark System and continue support the collaboration of the C2E partnerships
 - Consideration of the Management Plans as part of environmental impact assessment



Kerncliff Park - Burlington

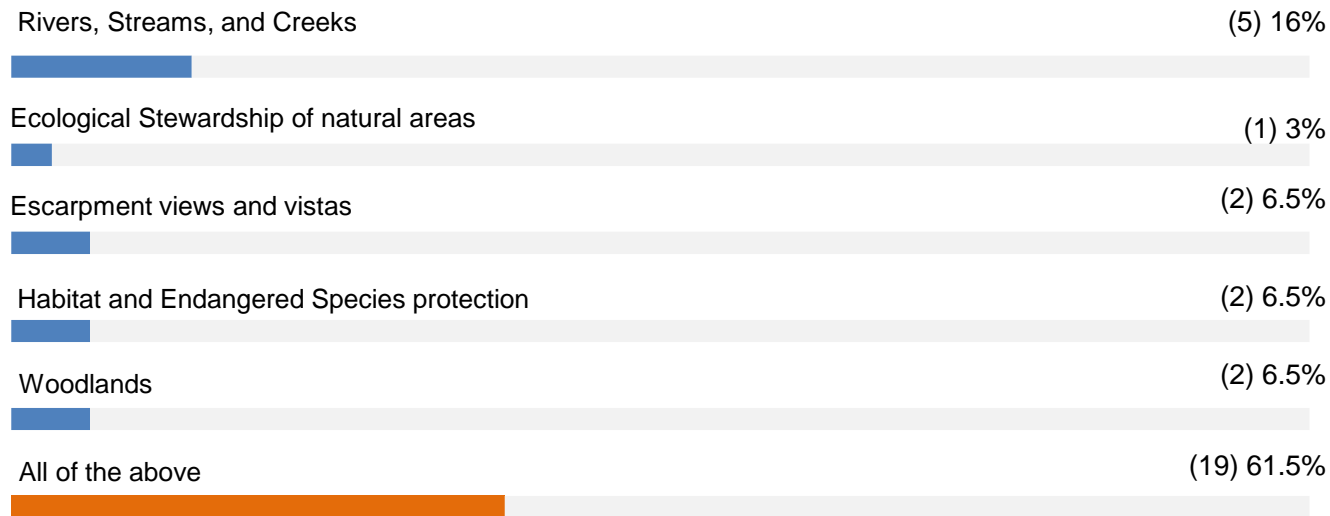
Participant Poll #3

What do you value most about the natural heritage of North Aldershot? (Multiple Choice)

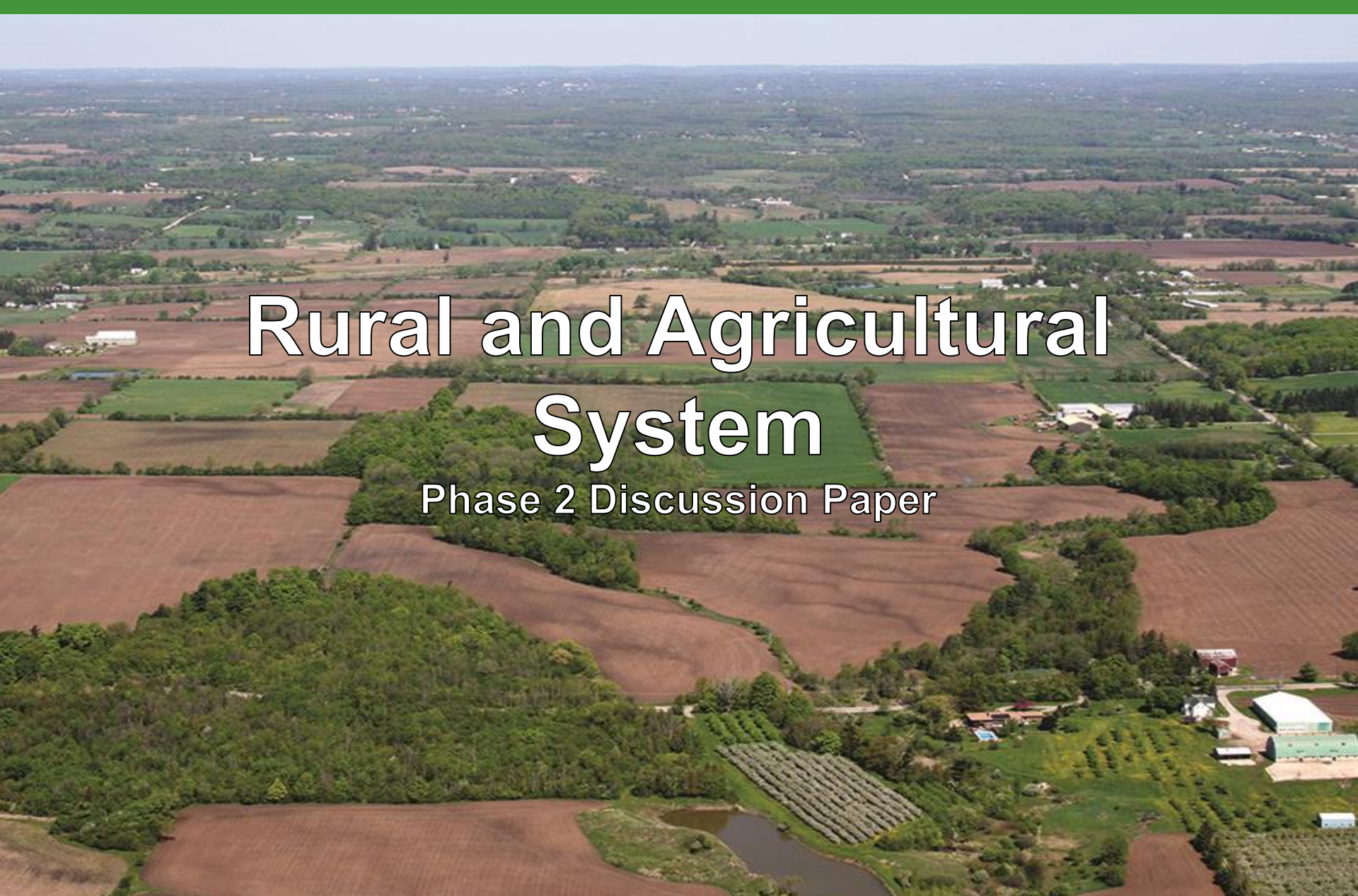
- a) Rivers, Streams and Creeks
- b) Ecological Stewardship of natural areas
- c) Escarpment views and vistas
- d) Habitat and Endangered Species protection
- e) Woodlands
- f) All of the above

Participant Poll #3 - Results

What do you value most about the natural heritage of North Aldershot? (Multiple Choice)



(31 of 31 Votes) 100%
Values rounded



Rural and Agricultural System

Phase 2 Discussion Paper

Policy Updates

Rural and Agricultural System

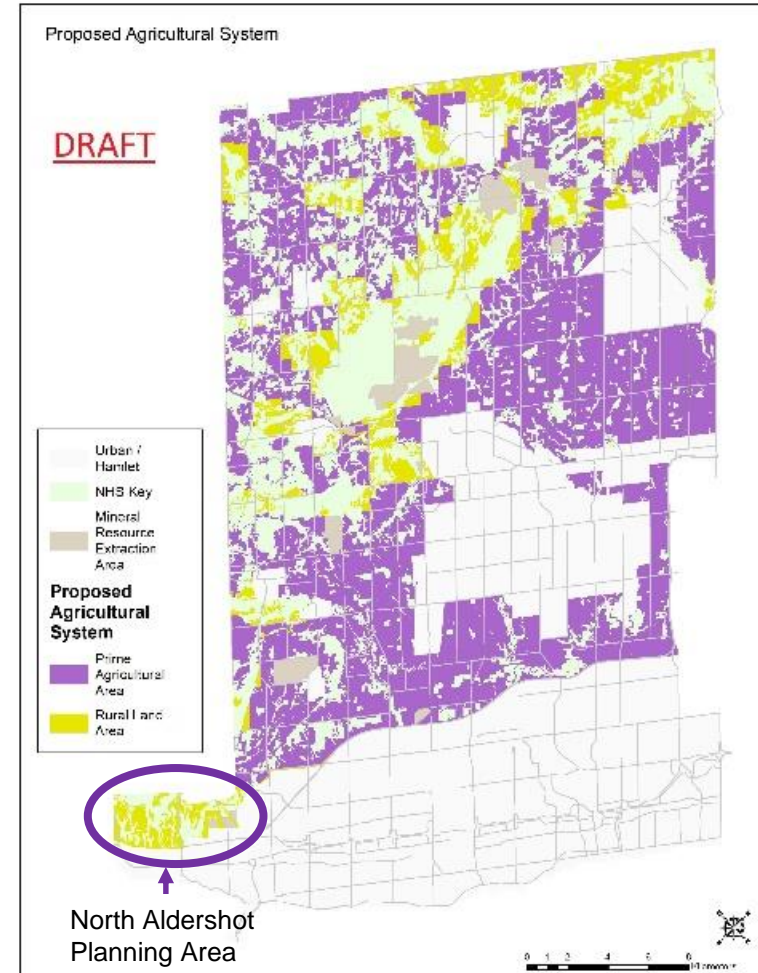
- 1) Mapping and Designation of Prime Agricultural Areas
- 2) Agriculture Related Uses
- 3) On-Farm Diversified Uses
- 4) Cemeteries
- 5) Agricultural Impact Assessments (AIAs)
- 6) Special Needs Housing



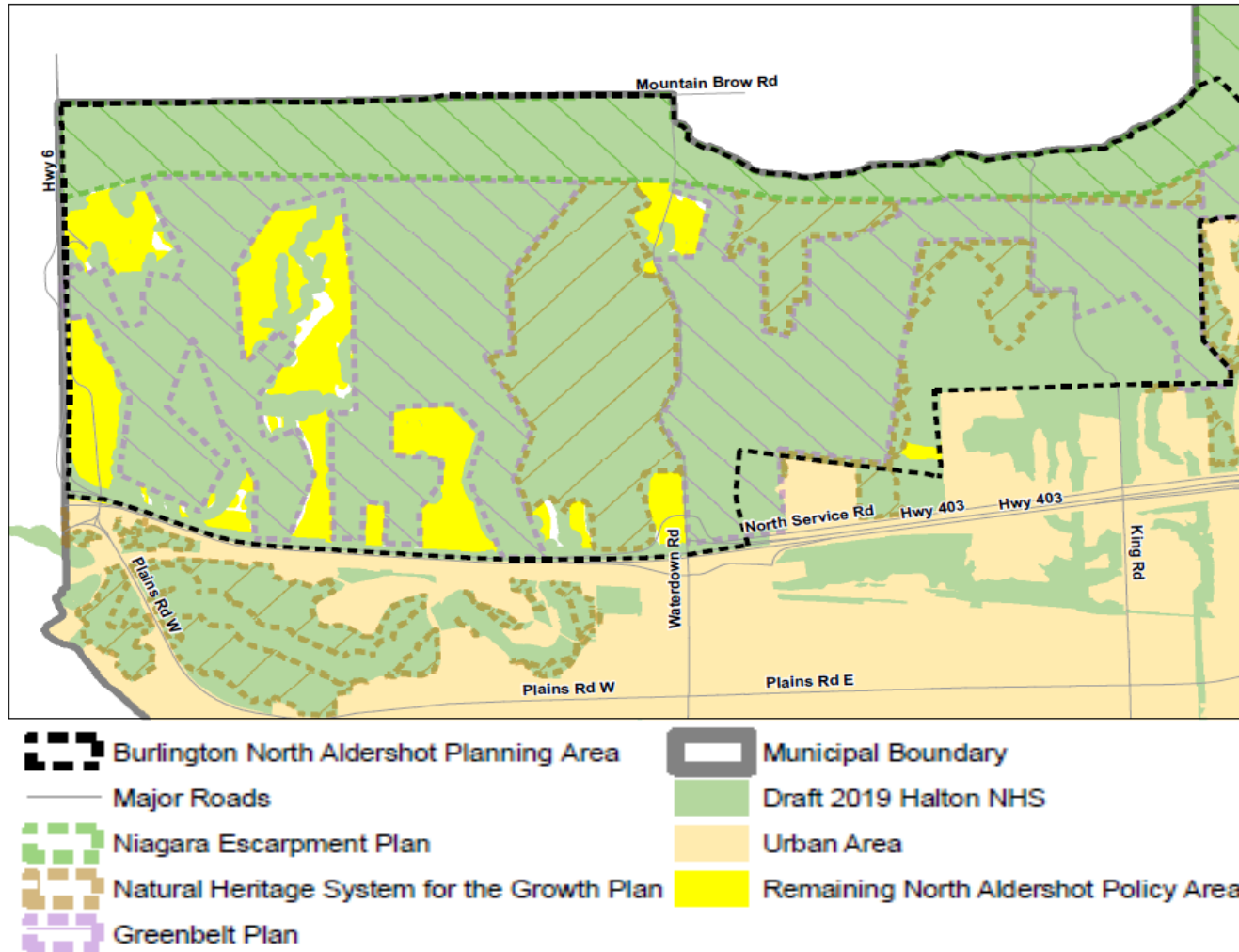
Mapping and Designation of Prime Agricultural Areas

Rural and Agricultural System

- Provincial Agricultural System mapping (February 2018) identifies extent of prime agricultural areas in Halton Region
- Updated Provincial direction to identify Prime Agricultural Areas as a designation while also identifying Key Features
- Consideration should be given to a preferred mapping update option
- Given Provincial Policy and environmental constraints, consideration should be given to identifying appropriate future land uses in the North Aldershot area.



Remaining Lands outside the Natural Heritage Systems



Integrated Growth Management Strategy

Regional Urban Structure

Phase 2 Discussion Paper



Growth Plan Requirements

Regional Urban Structure

- Integrated planning to accommodate population and employment forecasts on Schedule 3
- Intensification Strategy with minimum targets
- Designate all Employment Areas and establish minimum density targets
- Assess need and location for settlement boundary expansion



1.1 million
People by 2051 must be
planned for per the
Growth Plan



500 thousand
Jobs by 2051
must be planned for
per the
Growth Plan

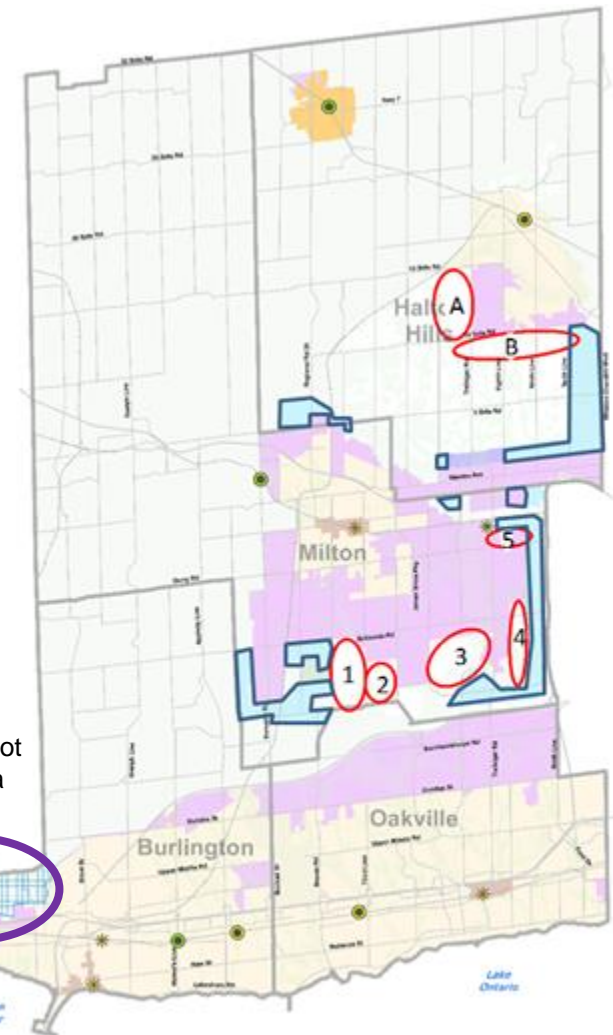
Settlement Areas

Regional Urban Structure

- Growth Plan (2020) requires Halton Region to identify Settlement Area boundaries and establish a minimum density target for the Designated Greenfield Area of the Region and the Local Municipalities
- Settlement Area boundary expansion may occur through a Municipal Comprehensive Review (with exceptions) by meeting policy tests



North Aldershot Planning Area



*Minimum – alternative density targets may be prescribed according to existing context.

Settlement Boundary Expansion Tests

- Ability to accommodate a full range of land uses to support the development of complete communities
- Sufficient capacity in existing or planned infrastructure
- Servicing financial impact and viability over the full life cycle
- Avoid potential negative impacts on watershed conditions and water resource system
- Avoid key hydrologic areas and the Natural Heritage System for the Growth Plan
- Avoid prime agricultural areas





Climate Change

Phase 2 Discussion Paper

A Land Use Response Policy Areas

We are applying a “Climate Change Lens” to policies across the Regional Official Plan to affect the way we grow, move and live in Halton.



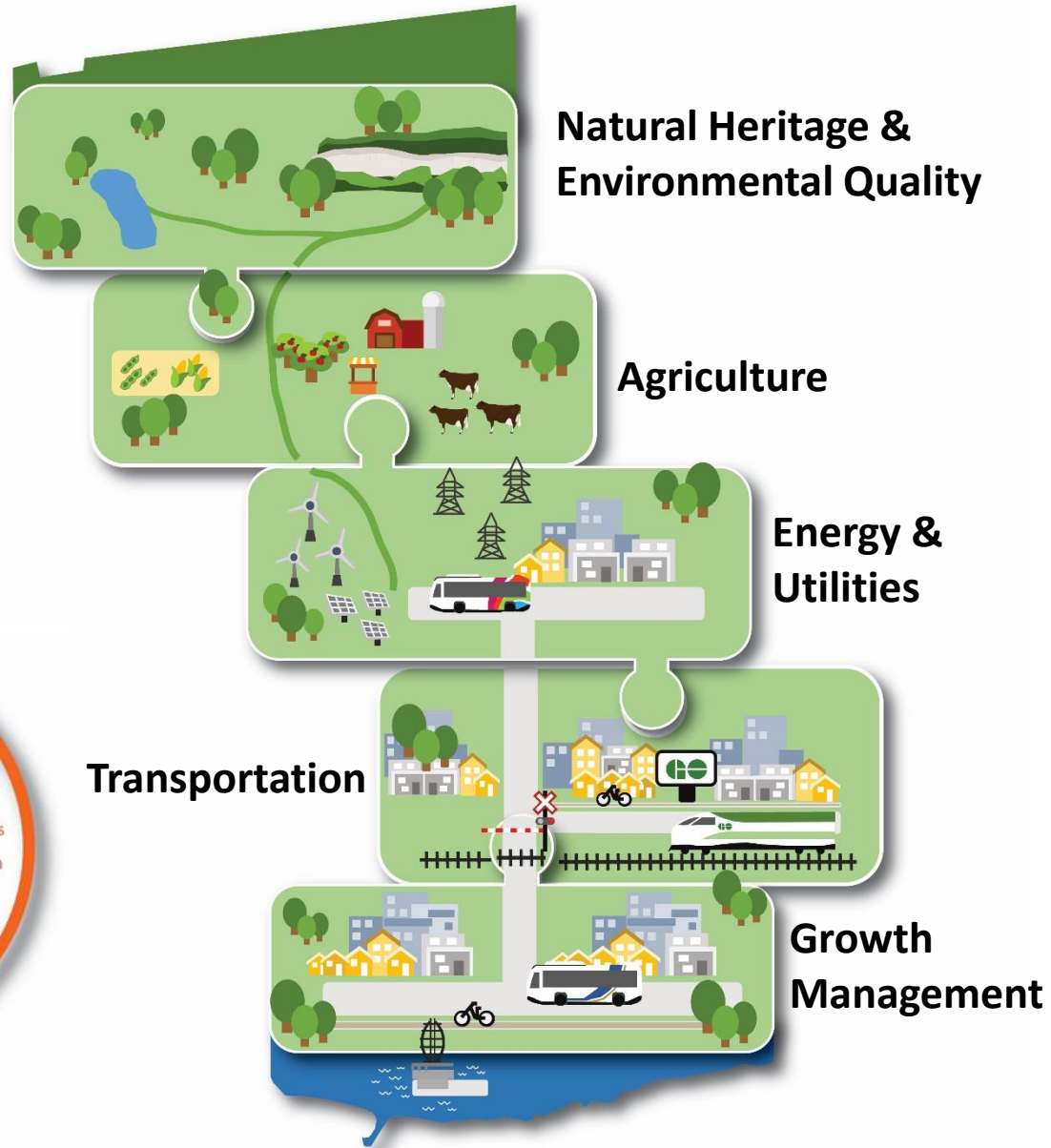
Adaptation

Climate change adaptation is the collection of actions taken to assist communities in responding to severe climate events, including preventing or minimizing the damage they can cause.



Mitigation

Climate change mitigation includes efforts undertaken to reduce or prevent emission of GHGs by using new technologies, renewable energies, compact built forms and active forms of transportation.



Concluding Comments

North Aldershot Planning Area

- The North Aldershot Planning Area Discussion Paper:
 - Outlines the changes in Provincial Policy guiding the Region's conformity requirement;
 - Presents the considerations to ensure and strengthen the long-term viability of the Natural Heritage System in the area, while providing a balanced approach to protecting agricultural and rural lands; and
 - Highlights the considerations to ensure effective growth management and servicing feasibility of the North Aldershot area.
- Intends to inform a fulsome and robust policy discussion, there are no predetermined conclusions.
- Facilitates the exploration of ideas in the context of broad public engagement, where all relevant options are explored.
- Regional staff are currently engaging with members of the public, stakeholders, and partner agencies to gain input on ideas and options outlined in the Discussion Papers.

Community Engagement

Virtual Public Information Centres (Start at 7pm):

- Sept. 3 – Climate Change (*completed*)
- Sept. 9 – North Aldershot Planning Area
- Sept. 10 – Regional Urban Structure / Integrated Growth Management Strategy
- Sept. 17 – Rural and Agricultural System, and Natural Heritage System

Website: www.halton.ca/ropr

- Download the 5 Discussion Papers
- Complete Questionnaires

Email: ropr@halton.ca

Telephone: 311



We Want to Hear from You!

Karyn Poad

Senior Planner, Transportation, Planning Services

Karyn.Poad@halton.ca

Website

www.halton.ca/ropr

Email

ropr@halton.ca

Telephone

311



Questions?



Community Engagement

Virtual Public Information Centres (Start at 7pm):

- Sept. 3 – Climate Change (*completed*)
- Sept. 9 – North Aldershot Planning Area
- Sept. 10 – Regional Urban Structure / Integrated Growth Management Strategy
- Sept. 17 – Rural and Agricultural System, and Natural Heritage System

Website: www.halton.ca/ropr

- Download the 5 Discussion Papers
- Complete Questionnaires

Email: ropr@halton.ca

Telephone: 311



We Want to Hear from You!

Karyn Poad

Senior Planner, Transportation, Planning Services

Karyn.Poad@halton.ca

Website

www.halton.ca/ropr

Email

ropr@halton.ca

Telephone

311

