

# Halton's Developmental Pathways

## Services for Young Children in Halton Region

### 18-MONTH WELL-BABY VISIT

Health Care Provider completes **Rourke Baby Record (RBR-ON)** informed by parent-completed **Nipissing District Developmental Screen (NDDS)<sup>TM</sup>**

**No Developmental Concern**  
No developmental concerns on the NDDS<sup>TM</sup> or RBR-ON

24-Month Repeat Surveillance

#### ONTARIO EARLY YEARS (OEYC)/ OTHER PARENTING/COMMUNITY PROGRAMS

- Halton Region
- Halton Our Kids Network  
Resources for professionals and families
- Ontario Early Years Centres in Halton

#### Above services include:

- Child Care
- Nutrition
- Recreation
- Safety
- Mental Health
- Behaviour
- Literacy
- Social Supports
- Parent/Child Attachment
- Cultural Services
- Early Child Development
- Early Learning Programs (including Drop Ins)
- Common Parenting Concerns
- Parent Programs

**Developmental Concern**  
1 or more no's on the NDDS<sup>TM</sup> or other developmental concern on the RBR-ON

RBR determines areas of concern

#### AREA OF DEVELOPMENTAL CONCERN

#### PROGRAMS AND SERVICES IN THE HALTON COMMUNITY

<b>Social/Emotional/Behavioural</b>	<ul style="list-style-type: none"> <li>• Halton Region</li> <li>• <b>ROCK (Reach Out Centre for Kids)</b> Assessment &amp; Diagnosis</li> </ul>
<b>Parenting</b>	<ul style="list-style-type: none"> <li>• Halton Region</li> <li>• Ontario Early Years Centres in Halton</li> </ul>
<b>Nutrition</b>	<ul style="list-style-type: none"> <li>• <b>Eat Right Ontario</b> Can provide information regarding local dietitians</li> <li>• <b>Halton Healthy Eating Network</b></li> </ul>
<b>Cognitive/Motor Self-Help Skills</b>	<ul style="list-style-type: none"> <li>• Halton Region Children's Developmental Services</li> </ul>
<b>Motor/Autism</b>	<ul style="list-style-type: none"> <li>• <b>ErinoakKids</b></li> </ul>
<b>Preschool Speech and Language</b>	<ul style="list-style-type: none"> <li>• <b>ErinoakKids</b></li> </ul>
<b>Hearing</b>	<ul style="list-style-type: none"> <li>• <b>ErinoakKids</b> Infant Hearing and Screening Services</li> <li>• <b>Halton Health Care, Milton</b></li> </ul>
<b>Vision</b>	<ul style="list-style-type: none"> <li>• <b>ErinoakKids</b> Blind Low Vision Program Services</li> </ul>

### CONTACT INFORMATION

**Eat Right Ontario**  
1-877-510-5102  
www.eatrightontario.ca

**ErinoakKids**  
T: 1-877-374-6625  
F: 905-855-9451

**Halton Health Care, Milton**  
T: 905-876-7022  
F: 905-876-7005

**Halton Healthy Eating Network**  
Dial 311

**Halton Region**  
Dial 311  
F: 905-825-8821

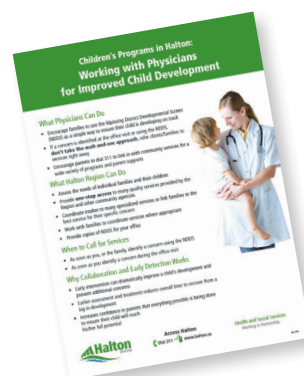
**Halton Region**  
Children's Developmental Services dial ext. 2586

**Ontario Early Years Centres in Halton**

- Oakville Parent-Child Centre: 905-849-6366
- Burlington-ROCK (Reach Out Centre for Kids): 905-632-9377
- North Halton OEYC Milton Community Resource Centre 905-876-1244  
OEYC Satellite: Links2Care 905-873-2960

**Our Kids Network**  
Resources for professionals and families  
info@ourkidsnetwork.ca  
www.ourkidsnetwork.ca

**ROCK (Reach Out Centre for Kids)**  
905-634-2347



For additional services and programs for children in Halton, please refer to your copy of *Working with Physicians for Improved Child Development*.