



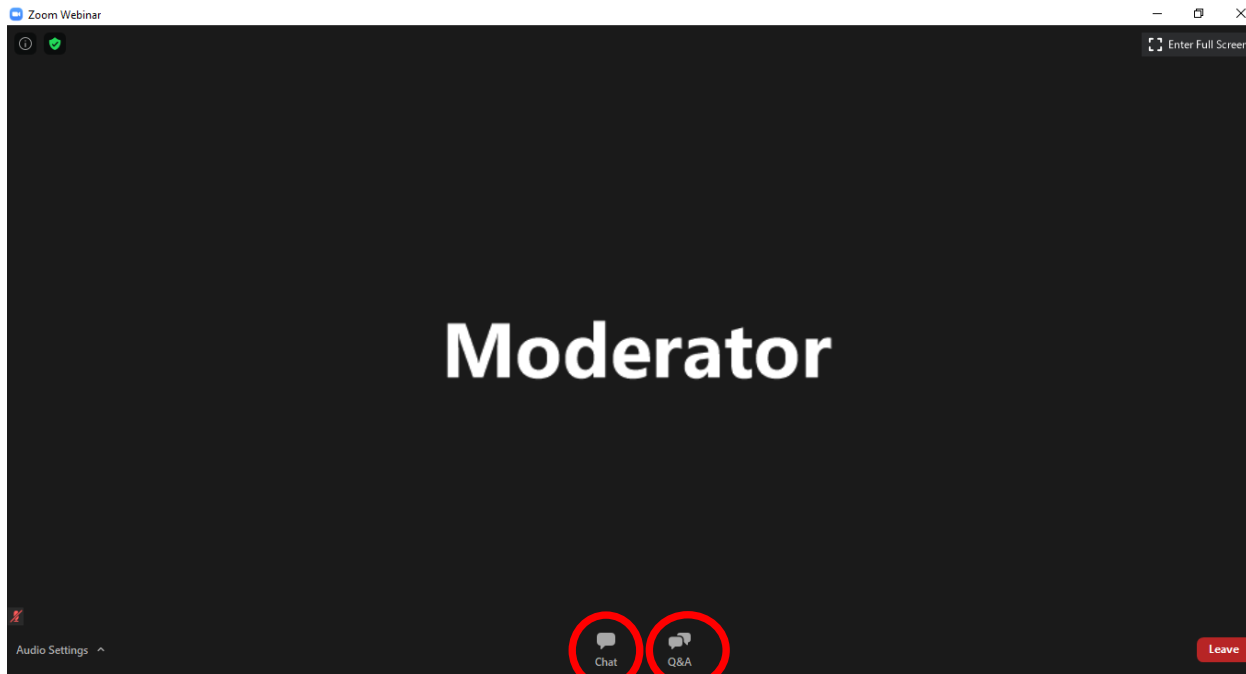
Welcome!

**Downtown Burlington
Urban Growth Centre and
Major Transit Station Area
Supplemental Discussion Paper**

We look forward to hearing from you!

Zoom Meeting Functions - Attendees

Personal Computer

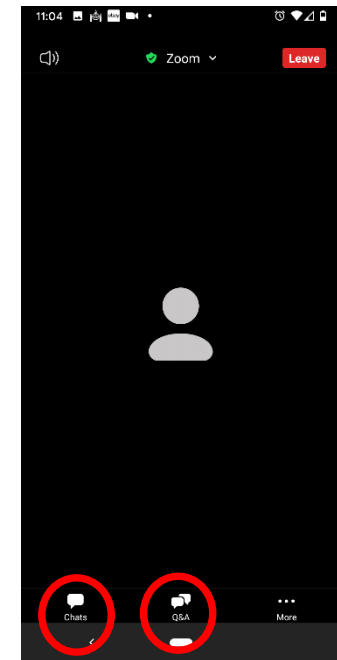


Disabled

Write a Question

If you're having technical problems, please communicate with our hosts using the Q&A Icon or contact ROPR@halton.ca.

Smart Phone



Disabled

Write a Question



Regional Official Plan Review:

Phase 2 – Downtown Burlington Urban Growth Centre and Major Transit Station Area Supplemental Discussion Paper



Virtual PIC

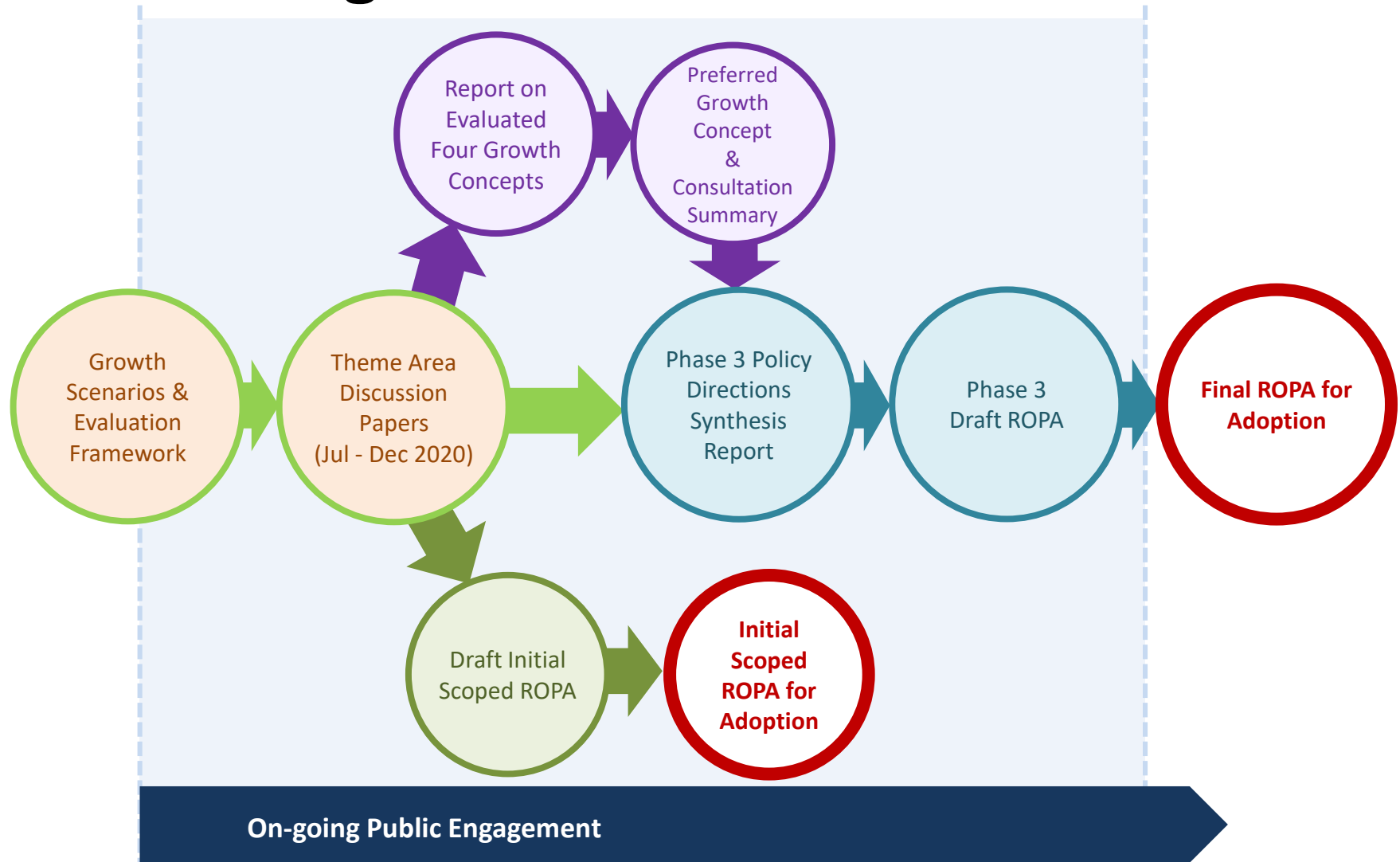
November 19, 2020



Halton.ca ☎ 311



Current Regional Official Plan Review Status



Community Engagement

Virtual Public Information Centres:

- November 19, 2020 – 1:00pm
- November 25, 2020 – 7:00pm

Website: www.halton.ca/ropr

- Download the Supplemental Discussion Paper
- Complete Questionnaire by December 22, 2020
- Use on-line ROPR Mapping Viewer

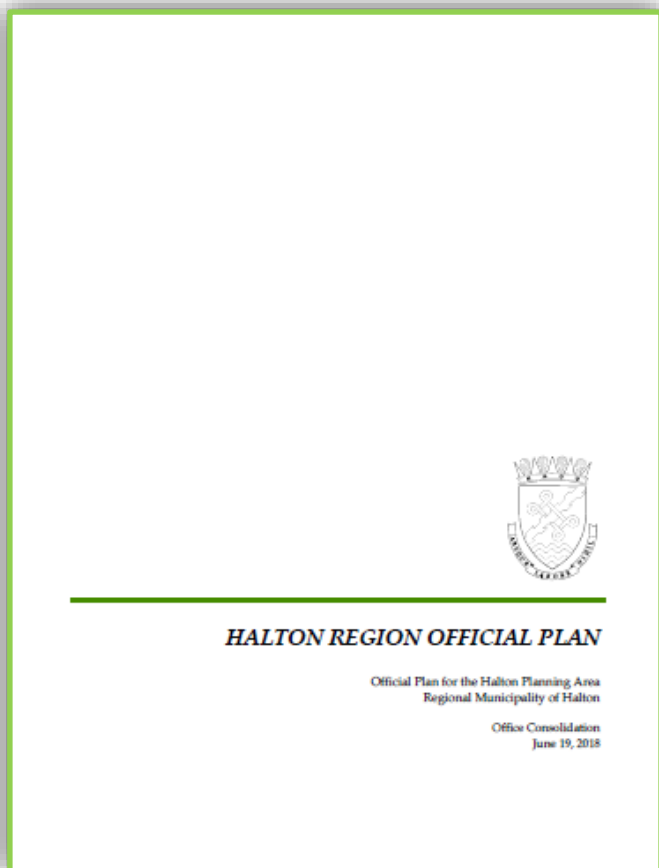
Email: ropr@halton.ca

Telephone: 311



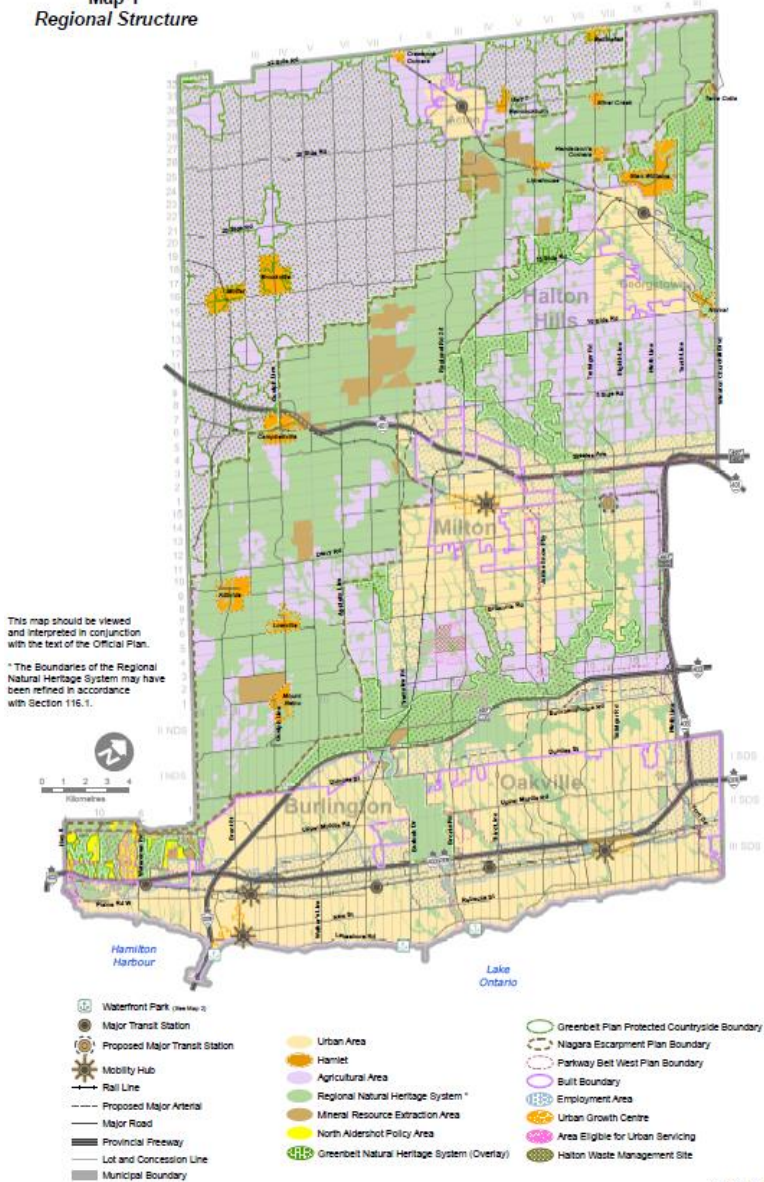
Participant Poll #1

What is the Regional Official Plan?



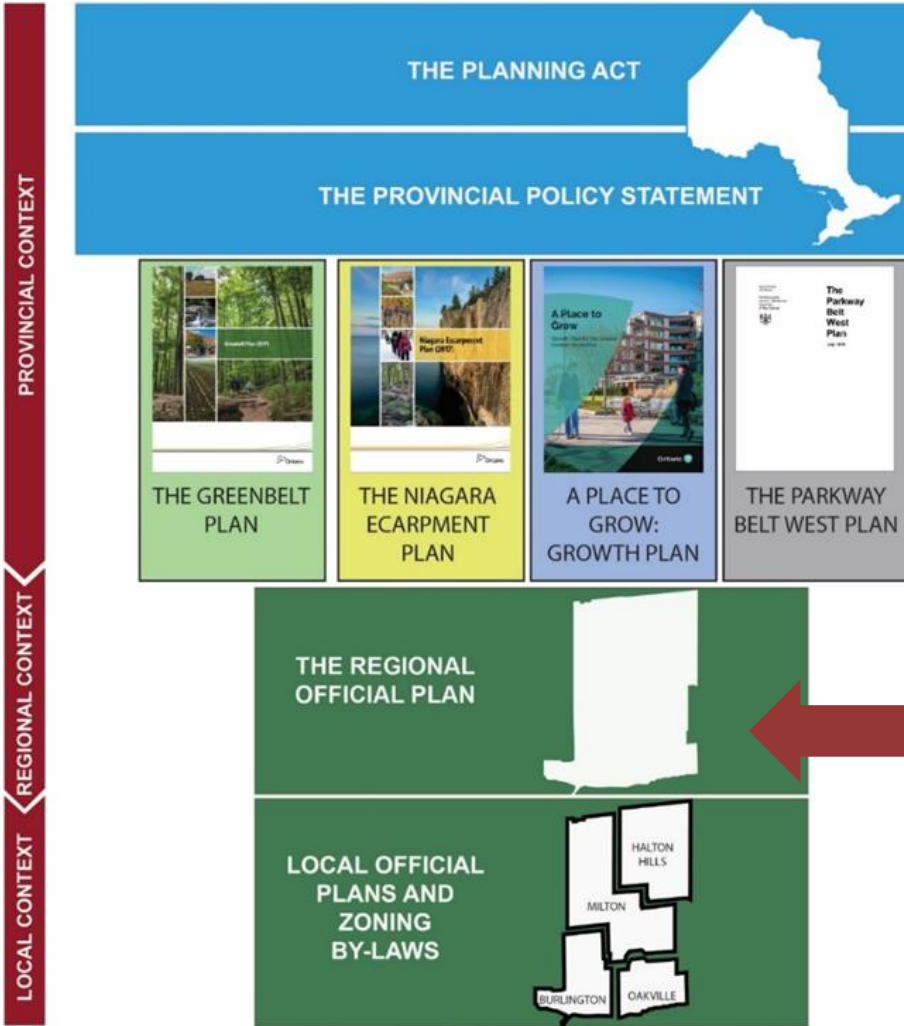
- Adopted by Council
- Long term Vision for Halton's physical form and community character
- Delivery of Regional services and responsibilities as set out in Planning Act, Municipal Act and other Provincial legislation

Map 1
Regional Structure



- Regional Structure implements Halton's land use planning vision
- Settlement Areas, Agricultural System, Natural Heritage System
- Provincial Plan Areas
- Province requires Halton to designate lands for future growth

Why Review the Regional Official Plan?

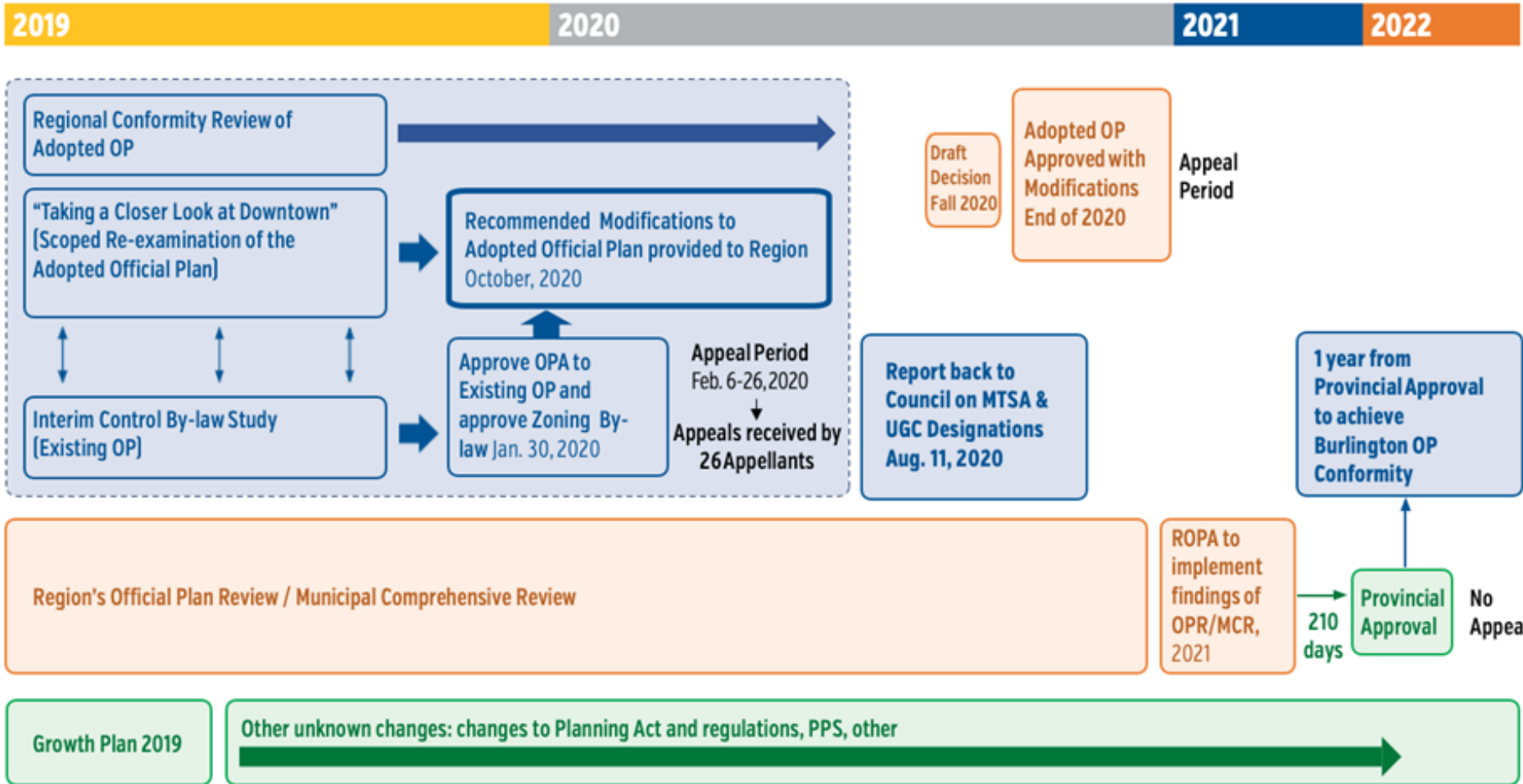


- The public plays an important role in the land use planning process.
- Your input helps Council make better decisions that affect your future.



Process Timeline (Multiple Projects)

Legend:
 City of Burlington
 Regional
 Provincial



Why an Integrated Growth Management Strategy matters?

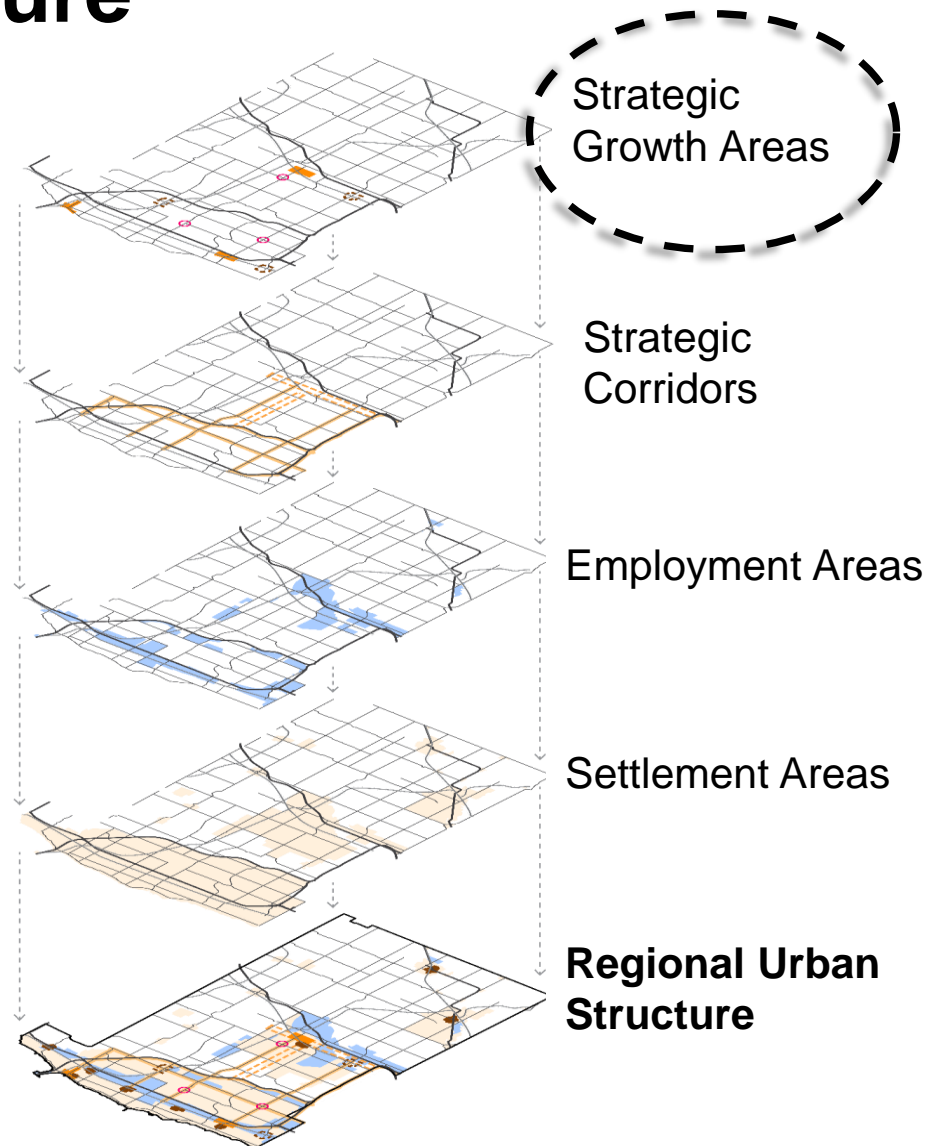


INTEGRATED GROWTH
MANAGEMENT STRATEGY

- How the Region plans for growth impacts livability of cities and delivery of public services
- Integrated Growth Management Strategy considers:
 - climate change,
 - natural environment,
 - housing needs,
 - efficient use of land,
 - employment,
 - transportation and water/ wastewater infrastructure, and,
 - financial impacts
- Integrated Growth Management Strategy will guide an update to the Regional Official Plan

Integrated Growth Management and the Regional Urban Structure

- How the Region plans for growth impacts livability of communities and delivery of public services
- Strategic Growth Areas important areas for accommodating growth
- Intensification opportunities supported by local plans and priorities to Strategic Growth Areas
- Allocation of growth must align with the community vision and needs



Participant Poll #2

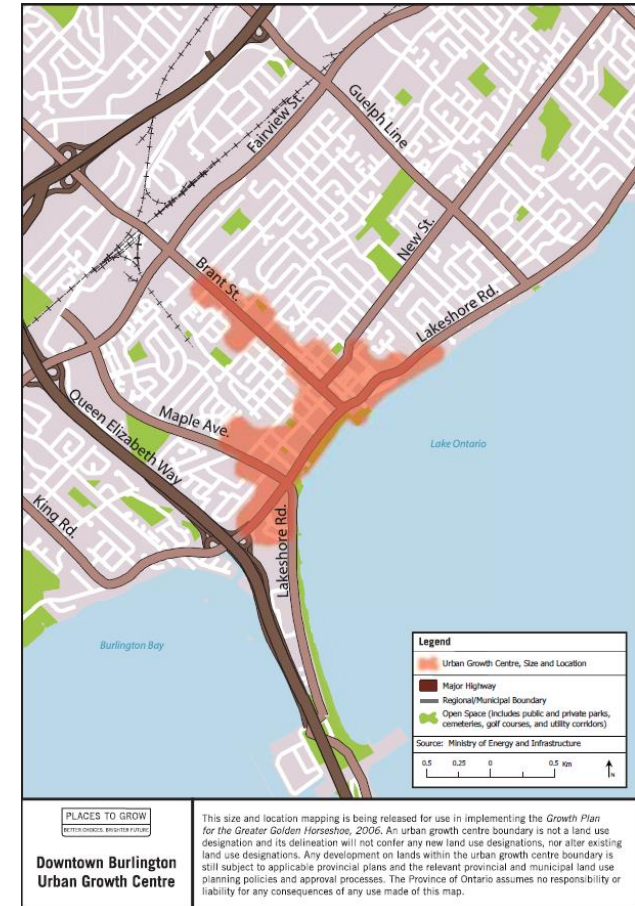
Supplemental Discussion Paper Overview

- Builds on the contents of the Regional Urban Structure Discussion Paper with two components:
 - Removal of the Downtown Burlington Major Transit Station Area designation
 - Proposed boundary adjustment to the Downtown Burlington Urban Growth Centre to generally align with lands in proximity to the Burlington GO Major Transit Station Area
- Supports growth and intensification that is transit supportive

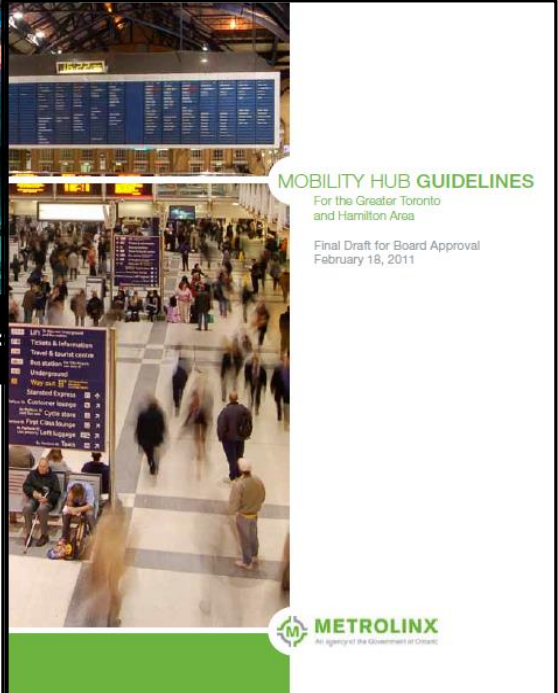
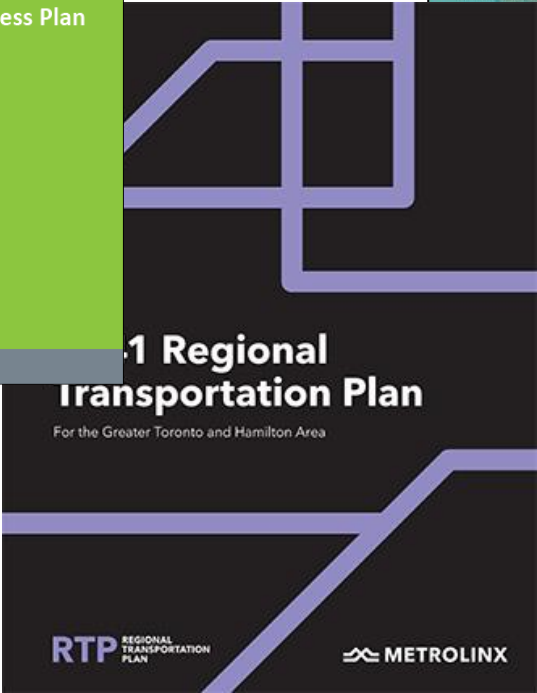
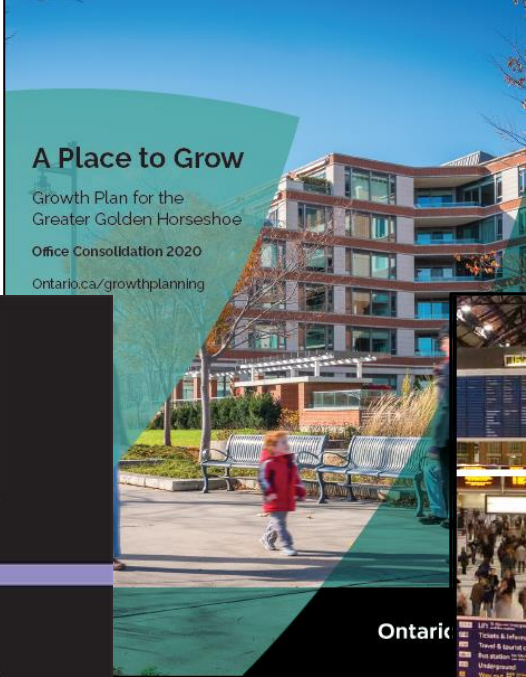
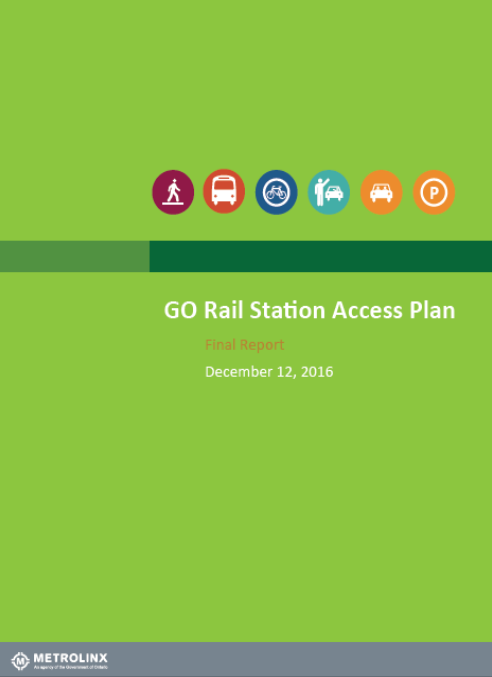
Provincial Identification

Downtown Burlington Urban Growth Centre

- Growth Plan (2006) identified 25 existing or emerging downtowns as Urban Growth Centres
- Delineation of the Urban Growth Centre was informed by guiding principles:
 - Contiguous area to accommodate growth and intensification
 - Area capable of accommodating density threshold
 - Area that includes at least one higher order transit hub and access to major transportation routes

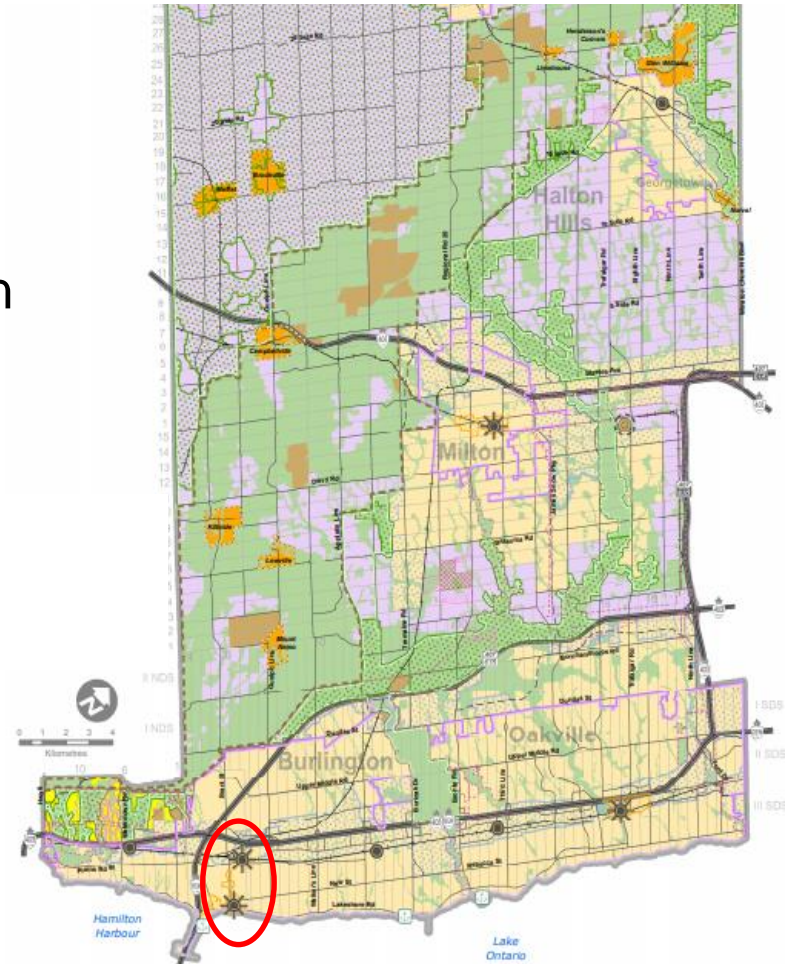


Provincial Identification Downtown Burlington Major Transit Station Area



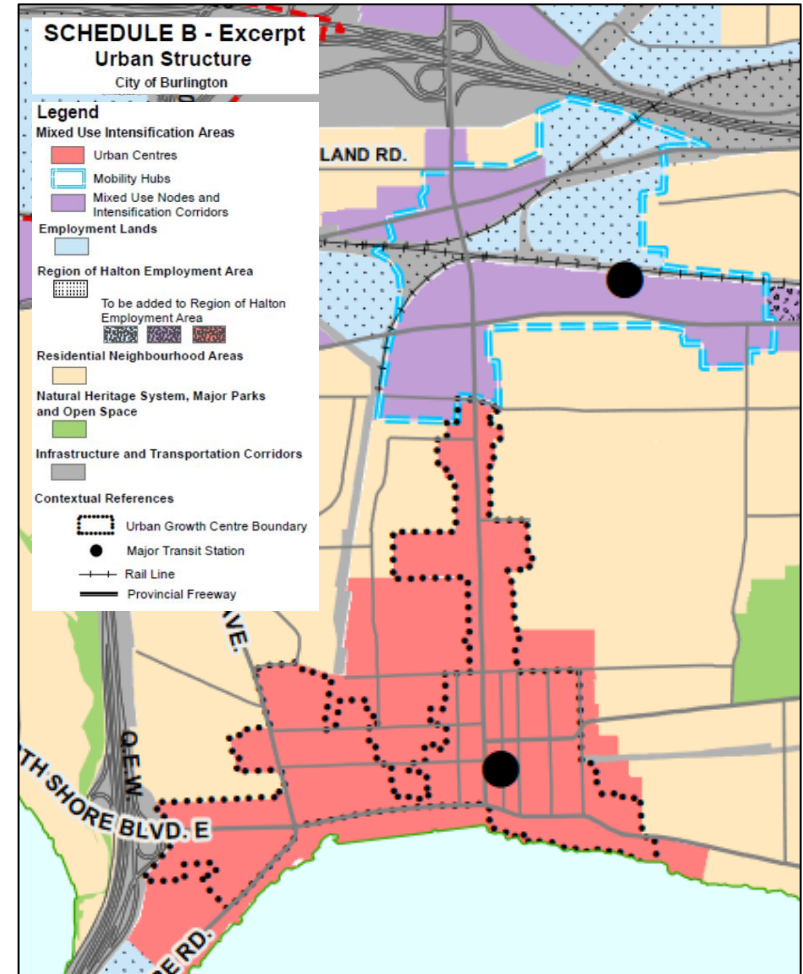
Current Regional Official Plan Downtown Burlington Urban Growth Centre and Major Transit Station Area designation

- The Regional Official Plan currently identifies Downtown Burlington as an Urban Growth Centre
- John Street bus terminal identified as an Major Transit Station Area
- The Integrated Growth Management Strategy is an appropriate instrument to consider changes to Urban Growth Centre policy direction



Burlington Official Plan Downtown Burlington Urban Growth Centre and Major Transit Station Area designation

- The Burlington Official Plan currently identifies Downtown Burlington as an Urban Growth Centre
- John Street bus terminal identified as an Major Transit Station Area



Major Transit Station Areas Community Areas

- The Region is responsible for identifying Major Transit Station Area boundaries under the Growth Plan
- Major Transit Station Areas on a Priority Transit Corridor must have minimum density target of 150 people + jobs per hectare
- Regional Urban Structure Discussion paper proposed a Major Transit Station Area Hierarchy

MTSA on a Growth Plan Schedule 5

Priority Transit Corridor and also a UGC

MTSAs on a Growth Plan Schedule 5

Priority Transit Corridors or a UGC

MTSAs not on a Growth Plan Schedule 5

Priority Transit Corridor

Other potential MTSAs

MTSAs to be considered for removal

Proposed Major Transit Station Area Hierarchy

Location	Proposed Delineation (Y/N)	Growth Plan Minimum Density Target (People/Jobs per ha)
Midtown Oakville	Y	200
Milton GO	Y	200
Burlington GO	Y	150
Bronte GO	Y	
Appleby GO	Y	
Aldershot GO	Y	TBD*
Georgetown GO	Y	
Acton GO	Y	
Trafalgar/Derry (Milton)	Y	TBD*
Tremaine Road (Milton)	N	n/a
Walkers Line (Burlington)	N	
Downtown Burlington	N	n/a

Note: *To be determined through the IGMS



Consideration of Major Transit Station Area Designation Removal

- Discussion paper explores removal of the Major Transit Station Area designation of the John Street Bus terminal
- Terminal is not located on a Growth Plan Priority Transit Corridor and is not supported by higher order transit nor frequent transit within a dedicated right of way
- Ministry of Municipal Affairs and Housing and Ministry of Transportation confirmed Region's ability to remove designation from the Regional Official Plan

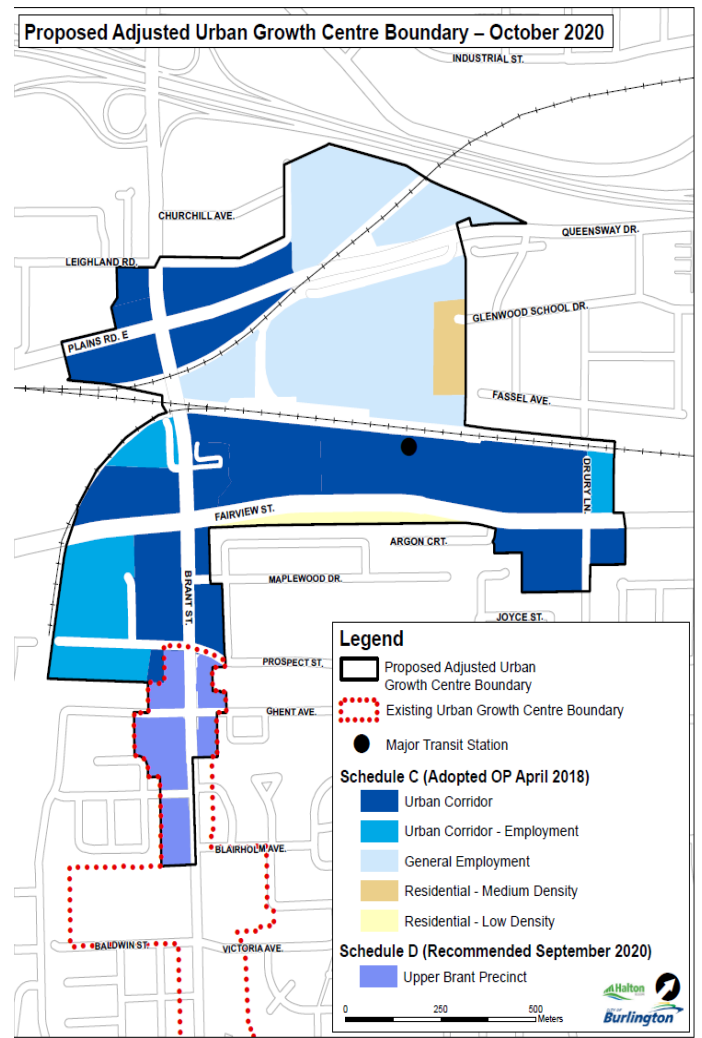


John Street Bus Terminal - City of Burlington
(Source: City of Burlington Interim Control Bylaw Land Use Study)

Participant Poll #3

Consideration of an Adjusted Urban Growth Centre Boundary

- Two options proposed for consideration:
 - Status Quo – Retain the existing Downtown Urban Growth Centre boundary
 - Proposed adjusted Urban Growth Centre boundary that:
 - Directs intensification growth to a Major Transit Station Area on a Provincial Priority Transit Corridor
 - Supports the proposed Regional Urban Structure
 - Leverages public infrastructure investment



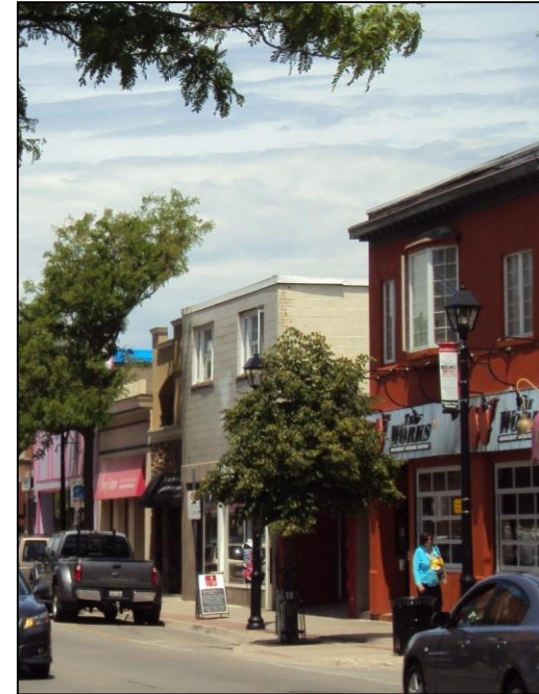
Urban Growth Centre An Adjusted Boundary Conformity Tests

- Support achievement of complete communities
- Prioritize intensification and higher densities in Strategic Growth Areas to support transit viability
- Flexibility to capitalize on new economic and employment opportunities
- Support range and mix of housing options
- Integrate land use planning and investment in infrastructure and public service facilities
- Integrate climate change considerations



What would this mean to the community?

- Downtown will continue to experience growth in a manner that respects the existing character and sense of place
- The Downtown will:
 - Retain Community Services that support the existing community
 - Remain vibrant with a variety of shopping and businesses
 - Remain a cultural destination
 - Continue to be a transit supportive community
- Area Specific Planning in the Burlington GO area will plan for future public services, housing and more, while leveraging investment.



Participant Poll #4

Concluding Comments

ROPR Phase 2 Supplemental Discussion Paper

- Supplemental Discussion Paper on the Downtown Burlington Urban Growth Centre and Major Transit Station Area summarizes the relevant policy directions pertaining to the identification of these areas
- Presents a discussion on the removal of the Downtown Burlington John Street Bus terminal as a Major Transit Station Area and presents a proposed adjusted Urban Growth Centre Boundary
- The intent of the Supplemental Discussion Paper is to facilitate public engagement and inform a fulsome and robust policy discussion
- The Supplemental Discussion Papers are intended to facilitate the exploration of ideas in the context of broad public engagement, where all relevant options are explored

Community Engagement

Virtual Public Information Centres:

- November 19, 2020 – 1:00pm
- November 25, 2020 – 7:00pm

Website: www.halton.ca/ropr

- Download the Supplemental Discussion Paper
- Complete Questionnaire
- Use on-line ROPR Mapping Viewer

Email: ropr@halton.ca

Telephone: 311



We Want to Hear from You!

Karyn Poad

Senior Planner, Planning Services

Karyn.Poad@halton.ca

Website

www.halton.ca/ropr

Email

ropr@halton.ca

Telephone

311



Questions?

