

Municipal Class Environmental Assessment Study WEST RIVER WASTEWATER PUMPING STATION & FORCEMAIN

Welcome

Public Information Centre

February 20, 2018

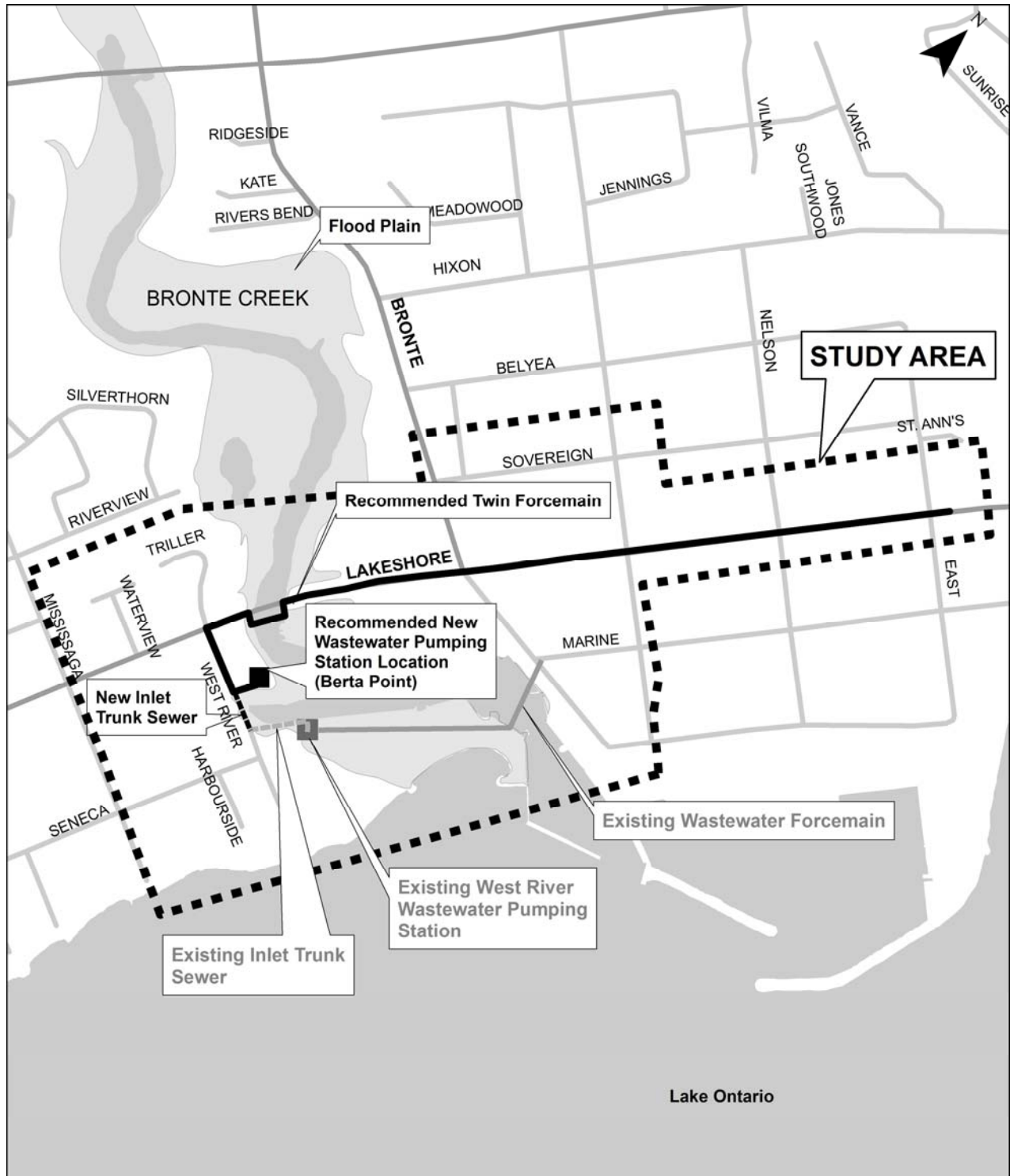
6:00 - 8:00 pm

Members of the Project Team are available to discuss and answer any questions you may have.

Please Sign In



STUDY AREA



PURPOSE OF THE PUBLIC INFORMATION CENTRE (PIC)

- To present:
 - Study Process
 - Background and Opportunities
 - Summary of PIC#1 (June 27, 2017)
 - Updated Alternatives
 - Recommended Solution
 - Mitigation Measures
 - Next Steps
- Discuss the project and collect public input

Comment sheets are available and we encourage you to fill one out at the PIC or submit it to the Project Team by

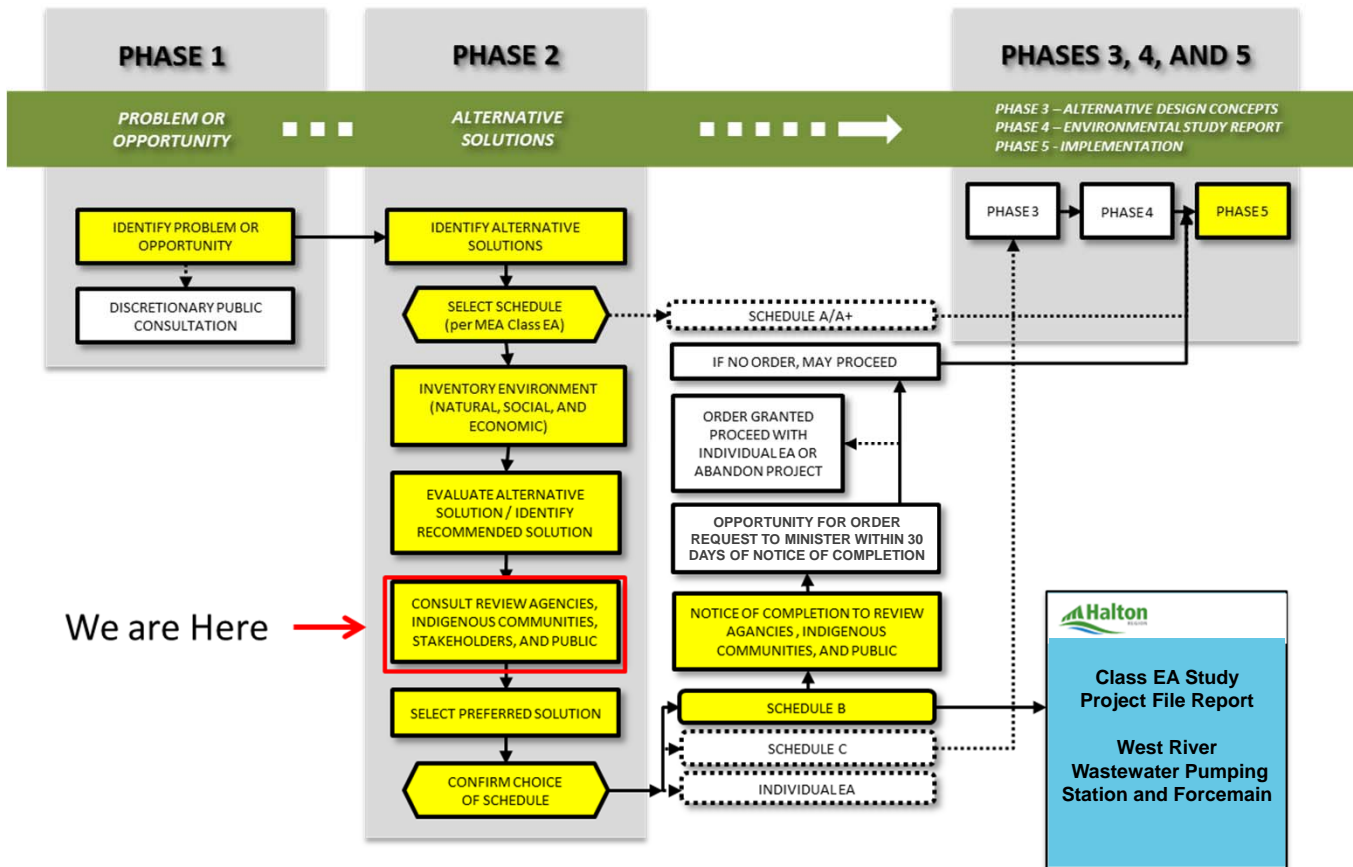
March 13, 2018



STUDY PROCESS

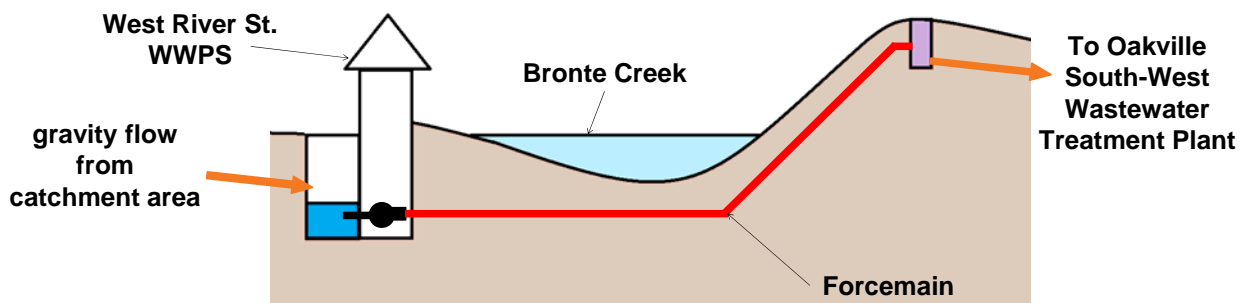
The Municipal Class Environmental Assessment (Municipal Class EA) is an approved process for planning and designing municipal projects. The Municipal Class EA describes the process that proponents must follow in order to meet the requirements of the *Ontario Environmental Assessment Act*.

Based on the scope of this project, the West River Wastewater Pumping Station (WWPS) & Forcemain Municipal Class EA Study is being undertaken as a Schedule 'B' project, which will complete Phases 1,2, and 5 outlined below.



WHY DO WE NEED A WASTEWATER PUMPING STATION HERE?

- The West River WWPS is essential to service your community
- Wastewater in the catchment area (approx. 20 hectares) flows by gravity to a low point at the West River WWPS
- Wastewater is then pumped to the Oakville South-West Wastewater Treatment Plant



WHY ARE WE DOING THIS PROJECT?

Exterior View of existing West River WWPS



The station is currently located in the floodplain



- The West River WWPS and forcemain were constructed in 1966 and upgraded in 1989 and 2004, respectively
- Components of the WWPS have been identified for upgrade to meet current design standards, to maintain the station in a state of good repair and to meet current and future flow requirements
- There are several concerns associated with the existing West River WWPS being located within the floodplain, including:
 - Risk of WWPS flooding
 - Operational concerns
 - Additional design requirements for new WWPS within floodplain (electrical, generator, two-storey building, etc.)

OPPORTUNITIES

- Relocation of pumping station outside of the floodplain.
- Consider a wide range of WWPS upgrade alternatives in order to meet the needs of the community.
- Improvement to system resiliency and minimize maintenance and operation.
- Upgrade the existing facility to meet current Region Standards to service the surrounding community.

Key Study Area Features:



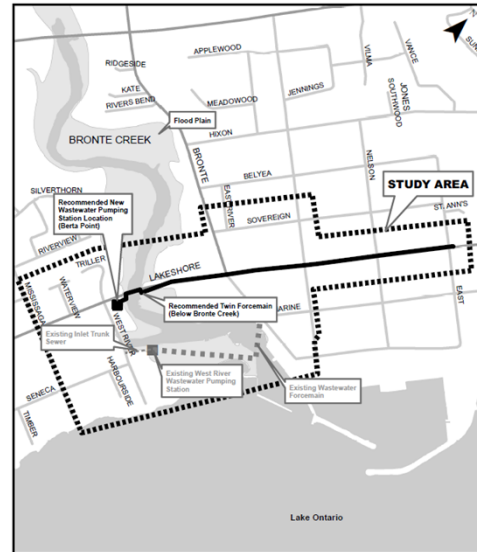
★ Existing West River Street Wastewater Pumping Station

1 Bronte Harbour 3 Berta Point Park

2 Bronte Creek 4 Memorial Trail

PIC #1 (June 27, 2017)

The purpose of PIC#1 was to allow the public and interested stakeholders an opportunity to learn more about the Study and provide input and comments on the recommended alternative solution.



WWPS Alternatives Considered:



- Alternative 1: Do Nothing
- Alternative 2: Divert Partial or All Flows to Gravity Sewer
- Alternative 3: Upgrade the Existing WWPS
- Alternative 4: Replace the WWPS on the Existing Site
- **Alternative 5: Construct New WWPS at Berta Point**
- Alternative 6: Construct New WWPS behind Public Washrooms
- Alternative 7: Construct New WWPS at Memorial Trail

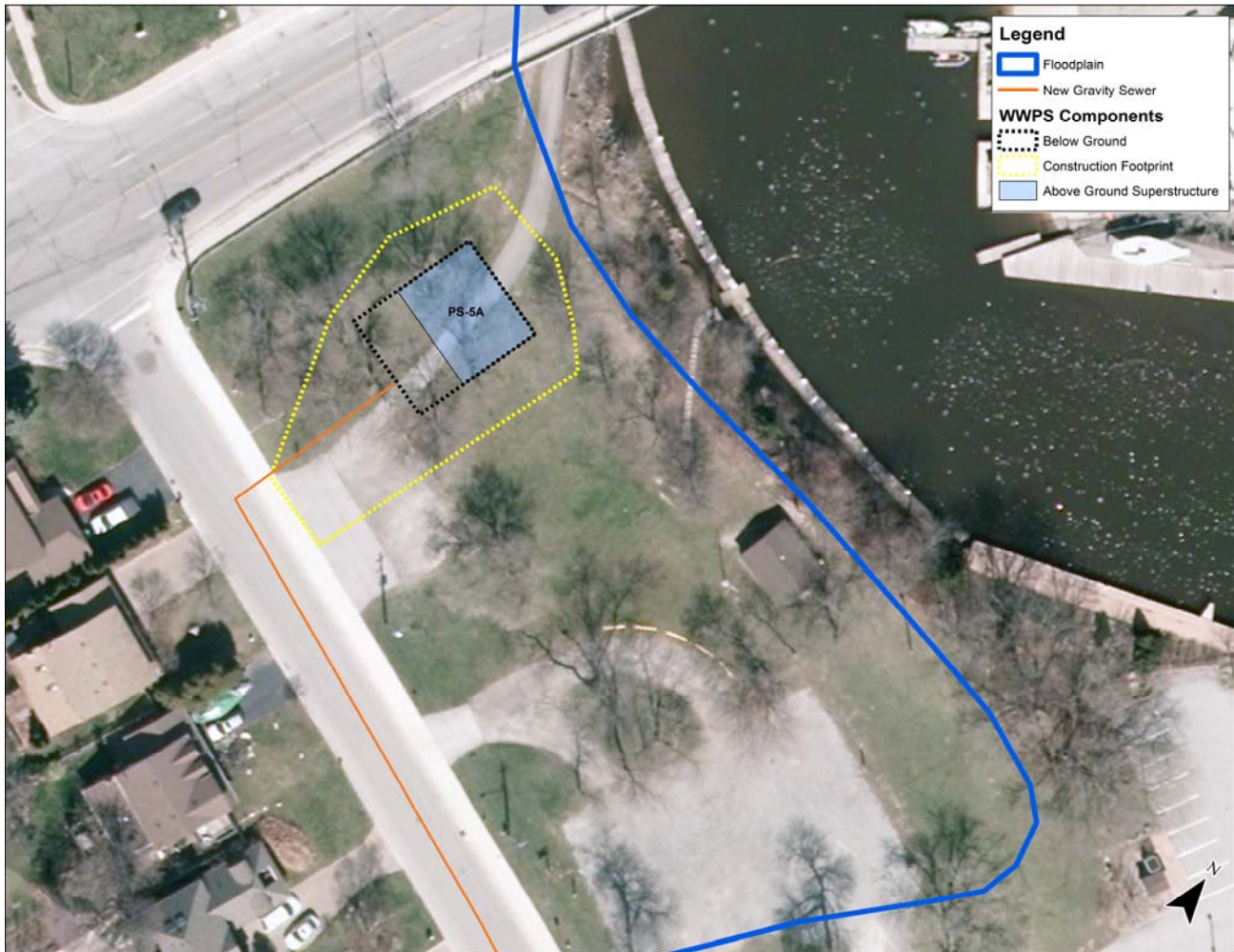
PIC#1 Recommended Solution: Alternative 5

KEY PIC #1 COMMENTS

Recommended Forcemain Solution:

- General acceptance of the recommended forcemain solution

Recommended WWPS Solution:



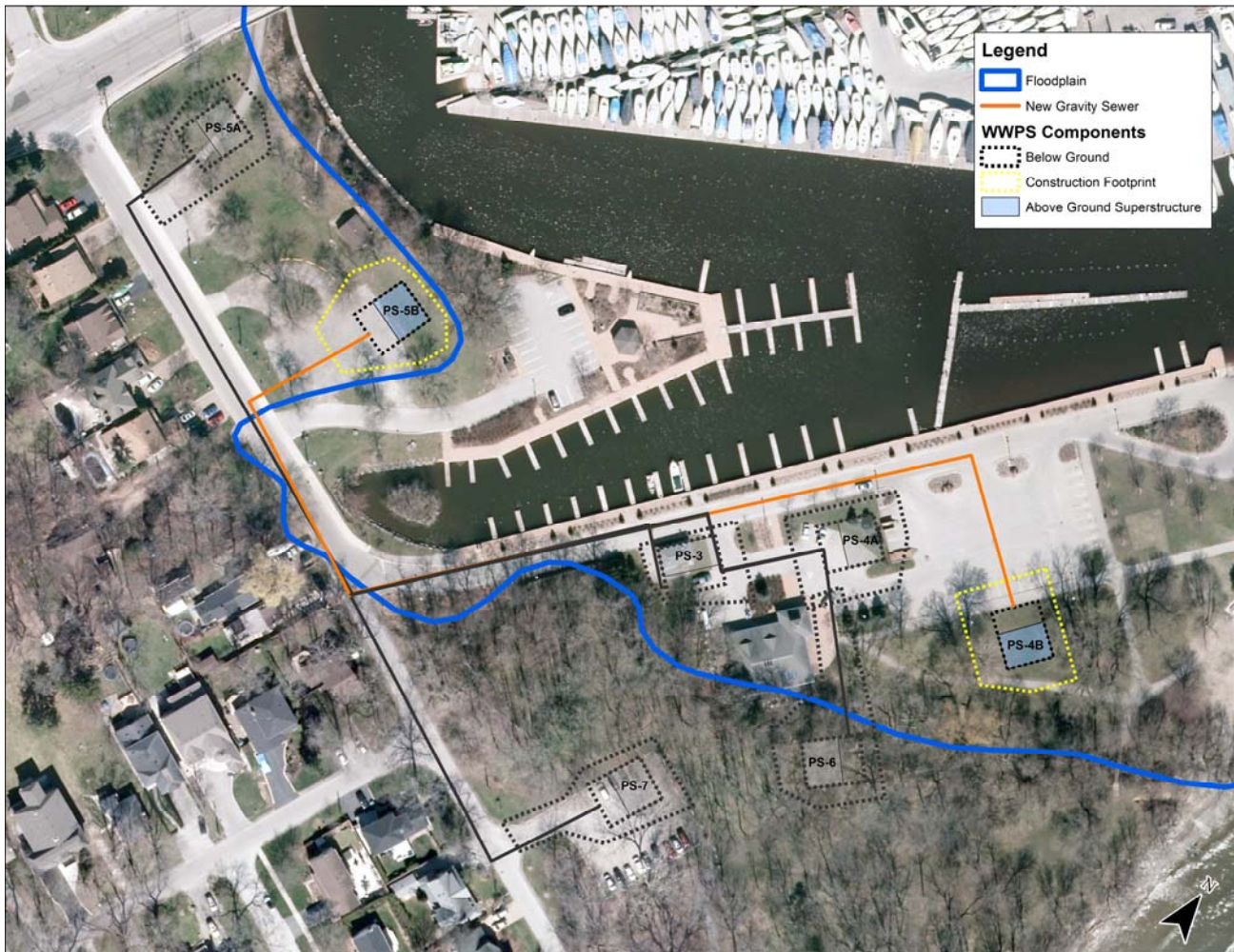
Comments:

- Disruption to the park and path
- Aesthetic impacts
- Potential noise and odour impacts
- Potential construction impacts
- Potential impacts to existing trees

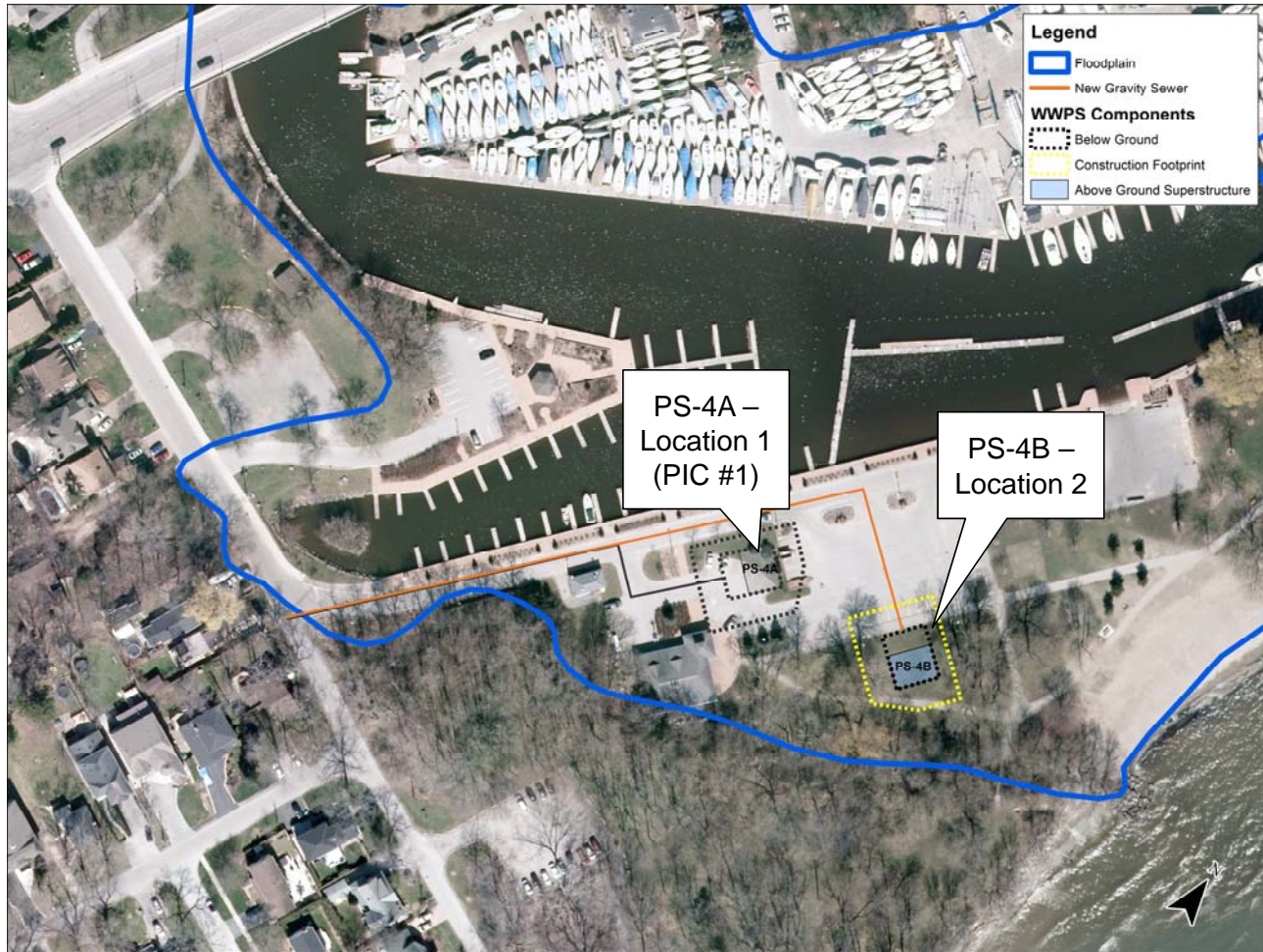
ACTIVITIES SINCE PIC #1

- Updated the WWPS alternative locations considering feedback received at PIC#1
- Updated review of WWPS locations in consideration of comments received at PIC#1
- Consulted with the Town of Oakville and Conservation Halton to obtain additional input

Updated and Re-evaluated WWPS Alternatives PS-4 and PS-5:



UPDATED ALTERNATIVE 4



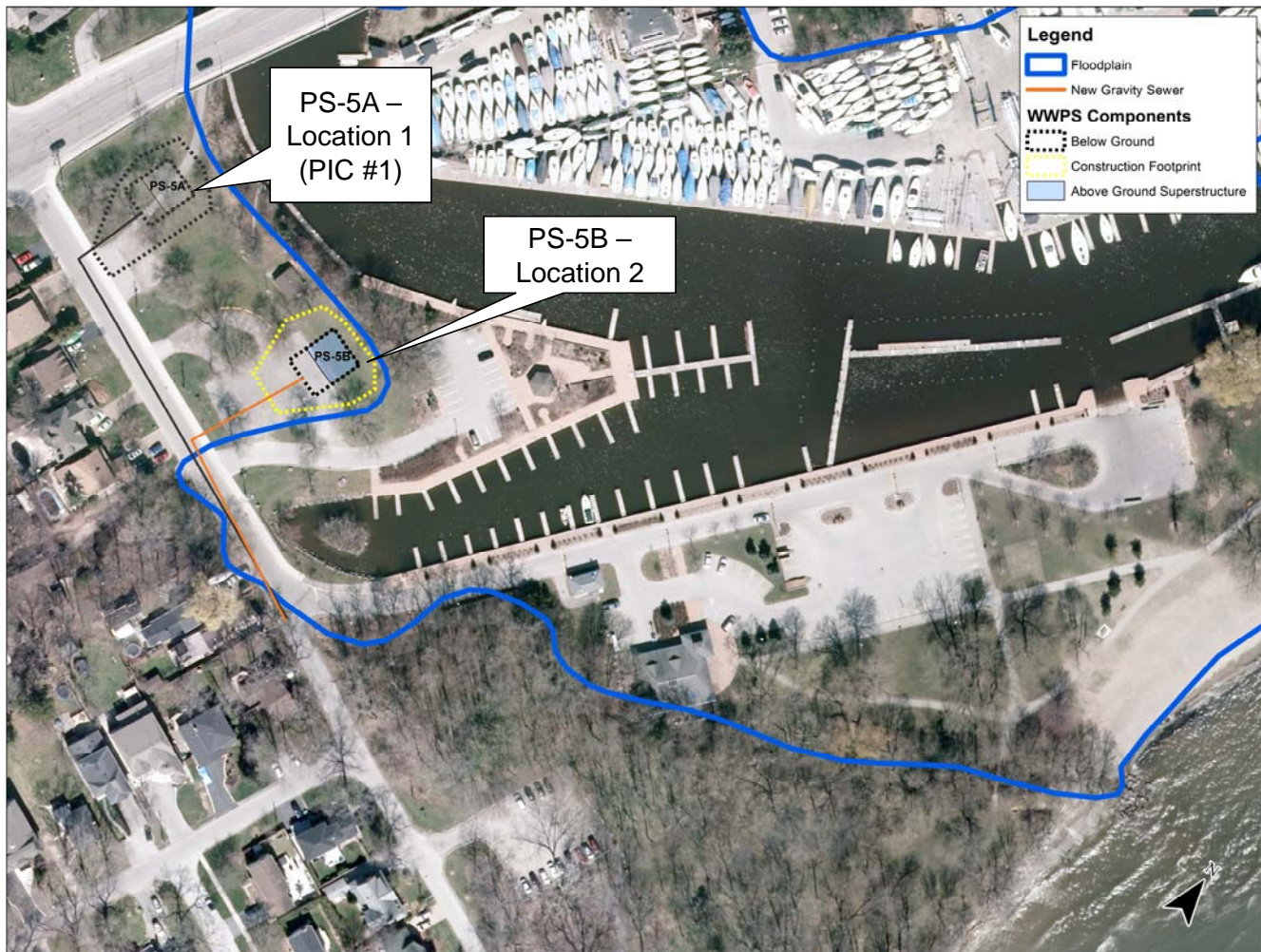
Alternative 4 – Replace WWPS on the Existing Site

This alternative was updated by moving the WWPS to reduce impacts to public parking. In order to meet current design standards, a two storey facility would be required.

Alternative is not preferred:

- Located within the floodplain
- Disruption to Bronte Harbour during the summer months
- Difficult to access for operations due to traffic / parking in the Bronte Harbour
- Construction challenges building on a slope
- Tree removal required

UPDATED ALTERNATIVE 5



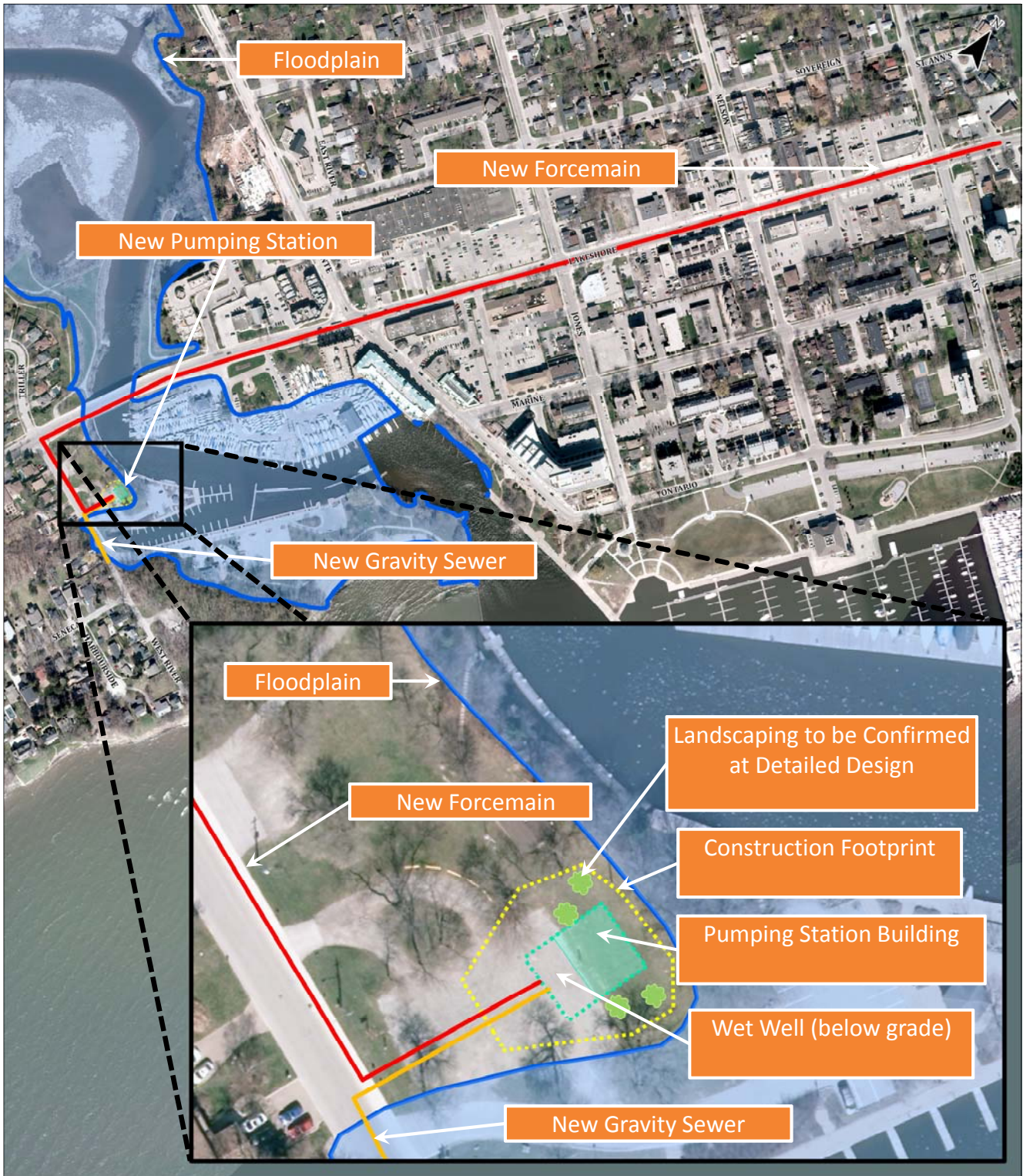
Alternative 5 – New WWPS at Berta Point

This alternative was updated by moving the WWPS to a location less disruptive to the park.

Alternative is preferred:

- Outside of floodplain (preferred by Conservation Halton)
- Away from pedestrian paths and recreational area
- Utilizes existing parking area
- Reduced operational concerns
- Mitigate risk of WWPS flooding
- Single-storey WWPS building design

RECOMMENDED SOLUTION



MITIGATION MEASURES

- Temporary site fencing will be in place during construction and disturbances such as noise, vibration and dust will be managed
- Access to Residences/Pedestrian Traffic will be maintained during construction
- Provision for noise and odour control systems as part of WWPS design
- WWPS layout and location will be designed to minimize impact to trees
- A PIC will be held prior to construction to present the design and obtain public input
- The architectural style will be determined at detailed design

Example of a Pumping Station:



Location and design of the wastewater pumping station to be confirmed at detailed design

NEXT STEPS

After this Public Information Centre, the following will be carried out:

- Review and respond to comments received
- Filing of the Project File Report for public review in Summer 2018
- Tentative schedule for Start of Construction in 2020

Visit the study website at: www.halton.ca/EAprojects

Please provide input by completing a Comment Sheet. Completed sheets can either be dropped in the comment boxes or submitted by mail, fax or e-mail to either of the following Project Team members:

David McCollum, P.Eng., PMP
Project Manager
Halton Region
1151 Bronte Road
Oakville, Ontario, L6M 3L1
Phone: (905) 825-6000 ext. 7093
Fax: (905) 847-2192
Email: David.McCollum@halton.ca

Rob Lewtas, P.Eng., PMP
Project Manager
Black & Veatch
50 Minthorn Boulevard, Suite 501
Markham, Ontario, L3T 7X8
Phone: (905) 370-1243
Fax: (905) 747-0974
Email: LewtasR@bv.com

Please provide all comments by March 13, 2018

Thank You For Attending!

