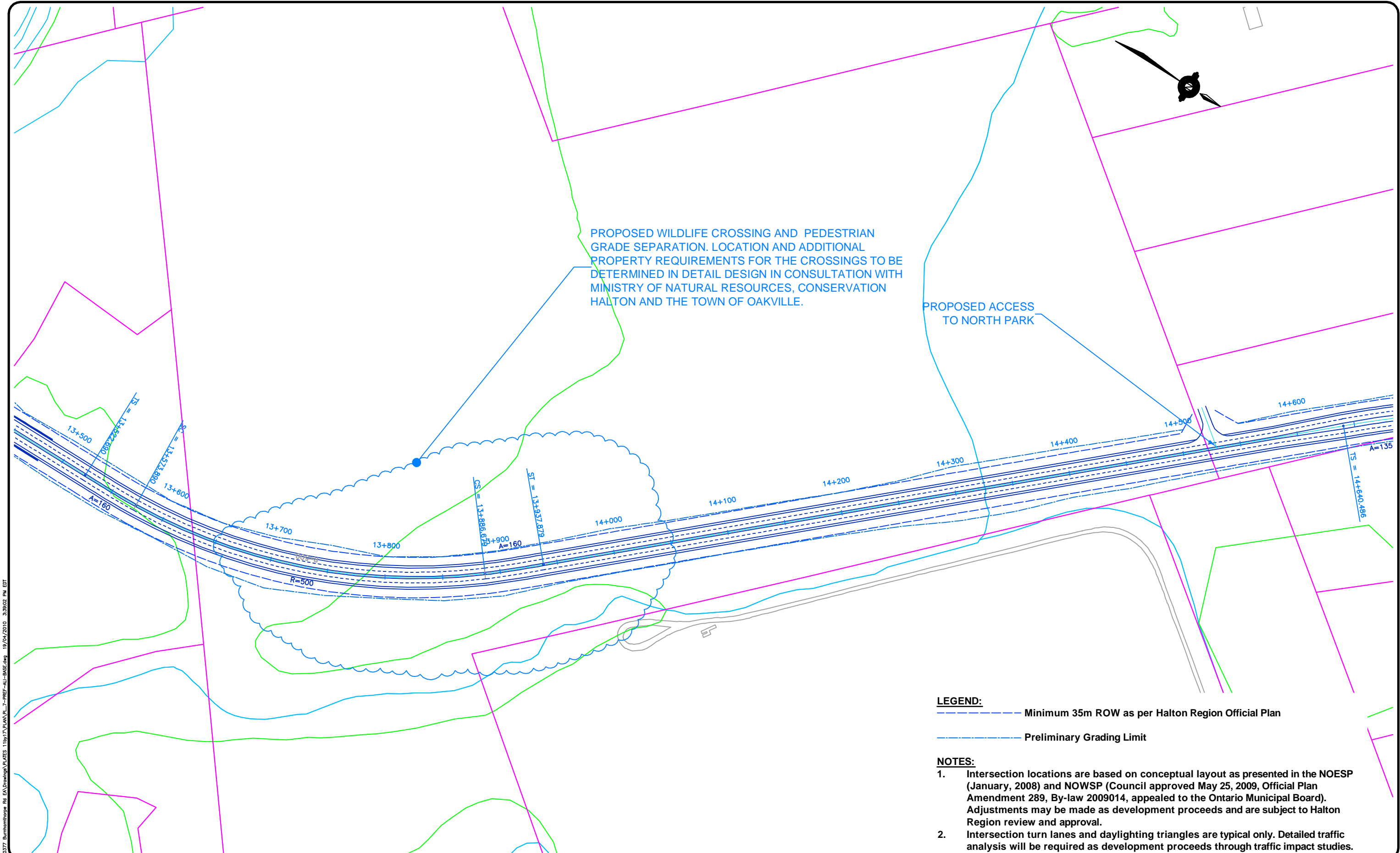


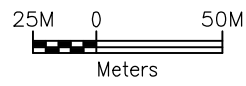
PROPOSED WILDLIFE CROSSING AND PEDESTRIAN GRADE SEPARATION. LOCATION AND ADDITIONAL PROPERTY REQUIREMENTS FOR THE CROSSINGS TO BE DETERMINED IN DETAIL DESIGN IN CONSULTATION WITH MINISTRY OF NATURAL RESOURCES, CONSERVATION HALTON AND THE TOWN OF OAKVILLE.

PROPOSED ACCESS TO NORTH PARK



- LEGEND:**
- Minimum 35m ROW as per Halton Region Official Plan
 - - - - - Preliminary Grading Limit

- NOTES:**
1. Intersection locations are based on conceptual layout as presented in the NOESP (January, 2008) and NOWSP (Council approved May 25, 2009, Official Plan Amendment 289, By-law 2009014, appealed to the Ontario Municipal Board). Adjustments may be made as development proceeds and are subject to Halton Region review and approval.
 2. Intersection turn lanes and daylighting triangles are typical only. Detailed traffic analysis will be required as development proceeds through traffic impact studies.



NEW NORTH OAKVILLE TRANSPORTATION CORRIDOR AND CROSSING OF THE SIXTEEN MILE CREEK CLASS ENVIRONMENTAL ASSESSMENT - REGION OF HALTON

PREFERRED DESIGN PLAN SHEET 7 of 22

G:\PROJECTS\42142-00\42-00377 Burnhamthorpe Rd EA Drawings\PLATES 11 by 17\PLANS\PL7-PREF-ALL-BASE.dwg 19/04/2010 3:39:02 PM EDT