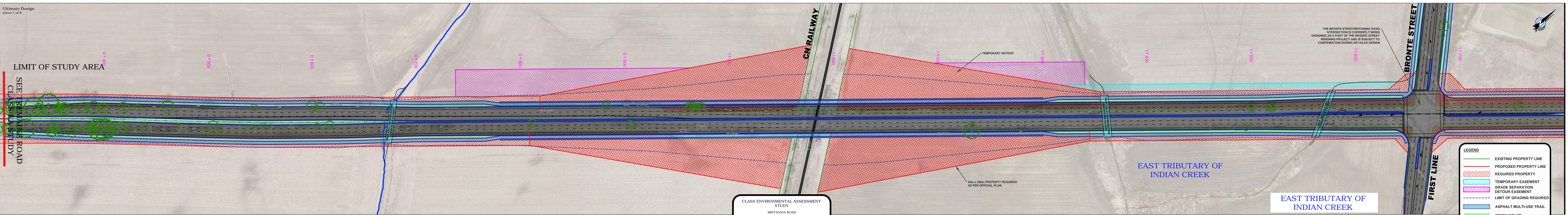


LIMIT OF STUDY AREA

SEE REMAINING ROAD CLASSIFICATION STUDY



CLASS ENVIRONMENTAL ASSESSMENT STUDY
BRITANNIA ROAD
(From Tremaine Road to Highway 407)

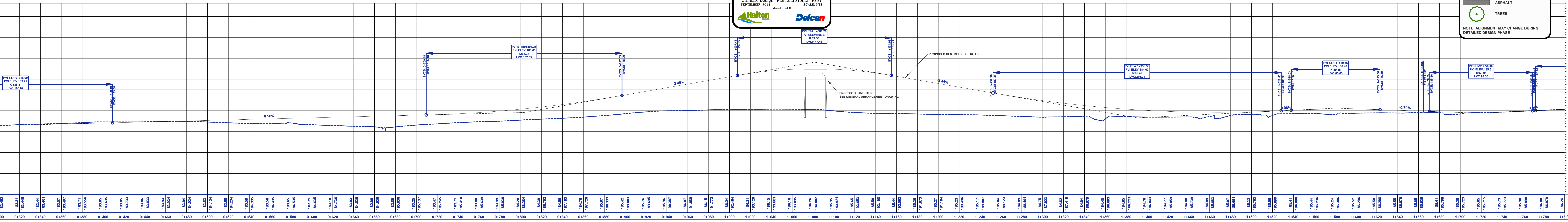
Ultimate Design - Plan and Profile - PP#1
SEPTEMBER, 2014 sheet 1 of 8 SCALE: NTS

Halton **Dalcan**

LEGEND

- EXISTING PROPERTY LINE
- PROPOSED PROPERTY LINE
- REQUIRED PROPERTY
- TEMPORARY EASEMENT
- GRADE SEPARATION DETOUR EASEMENT
- LIMIT OF GRADING REQUIRED
- ASPHALT MULTI-USE TRAIL
- GREEN SPACE
- ASPHALT
- TREES

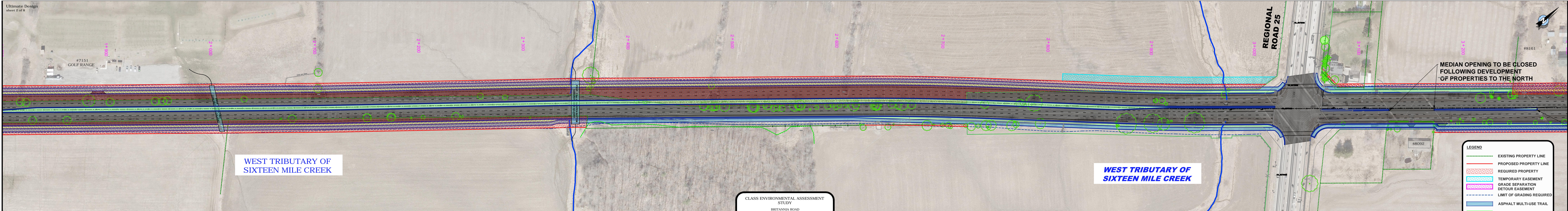
NOTE: ALIGNMENT MAY CHANGE DURING DETAILED DESIGN PHASE



MATCHLINE - SEE PP#2

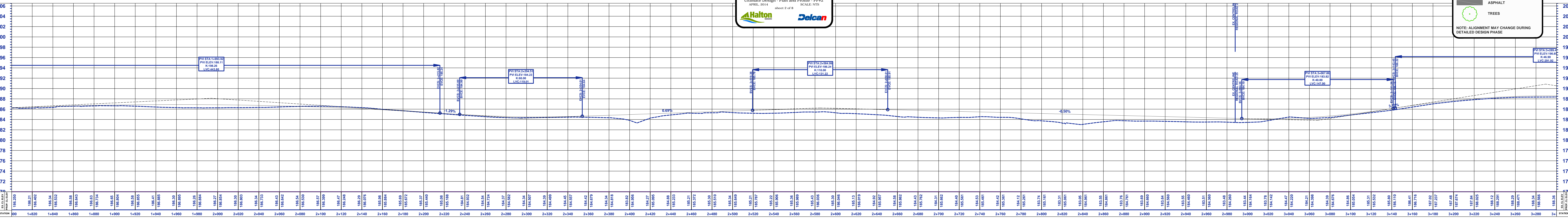
MATCHLINE - SEE PP#1

MATCHLINE - SEE PP#3



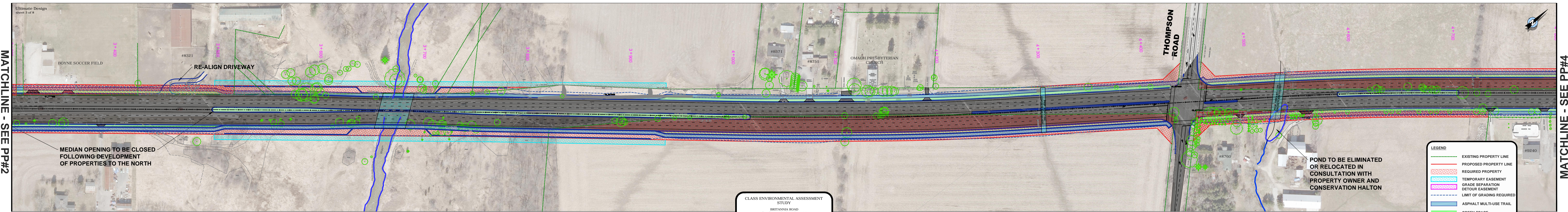
CLASS ENVIRONMENTAL ASSESSMENT STUDY
BRITANNIA ROAD
(From Tremaine Road to Highway 407)

Ultimate Design - Plan and Profile - PP#2
APRIL, 2014 sheet 2 of 8 SCALE: NTS



MATCHLINE - SEE PP#2

MATCHLINE - SEE PP#4

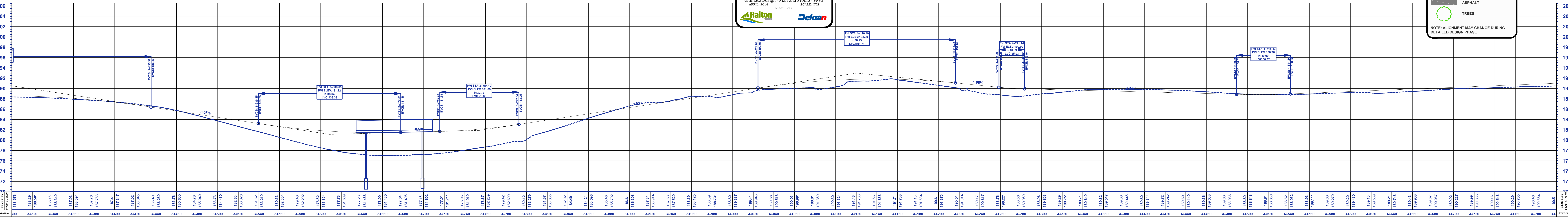


CLASS ENVIRONMENTAL ASSESSMENT STUDY
BRITANNIA ROAD
(From Tremaine Road to Highway 407)
Ultimate Design - Plan and Profile - PP#3
APRIL, 2014 sheet 3 of 8 SCALE: NTS

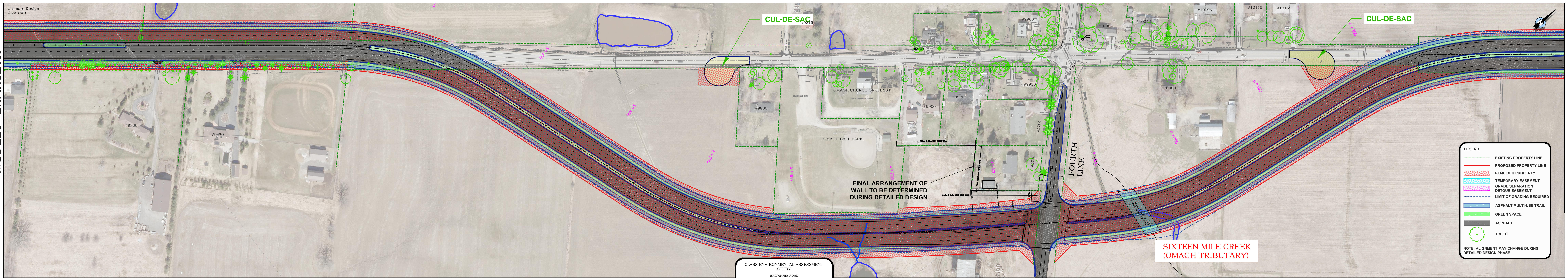
LEGEND

- EXISTING PROPERTY LINE
- PROPOSED PROPERTY LINE
- REQUIRED PROPERTY
- TEMPORARY EASEMENT
- GRADE SEPARATION
- DETOUR EASEMENT
- LIMIT OF GRADING REQUIRED
- ASPHALT MULTI-USE TRAIL
- GREEN SPACE
- ASPHALT
- TREES

NOTE: ALIGNMENT MAY CHANGE DURING DETAILED DESIGN PHASE



MATCHLINE - SEE PP#3

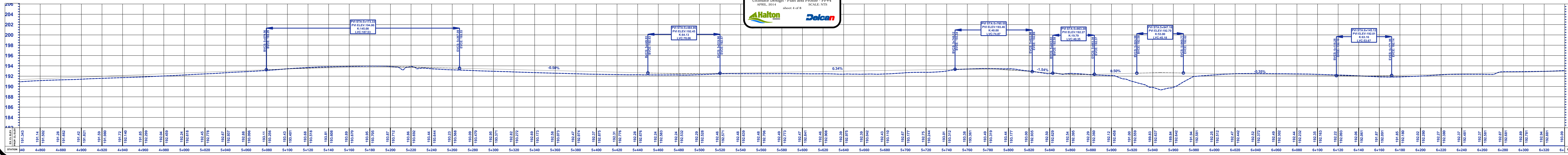


LEGEND

- EXISTING PROPERTY LINE
- PROPOSED PROPERTY LINE
- REQUIRED PROPERTY
- TEMPORARY EASEMENT
- GRADE SEPARATION
- DETOUR EASEMENT
- LIMIT OF GRADING REQUIRED
- ASPHALT MULTI-USE TRAIL
- GREEN SPACE
- ASPHALT
- TREES

NOTE: ALIGNMENT MAY CHANGE DURING DETAILED DESIGN PHASE

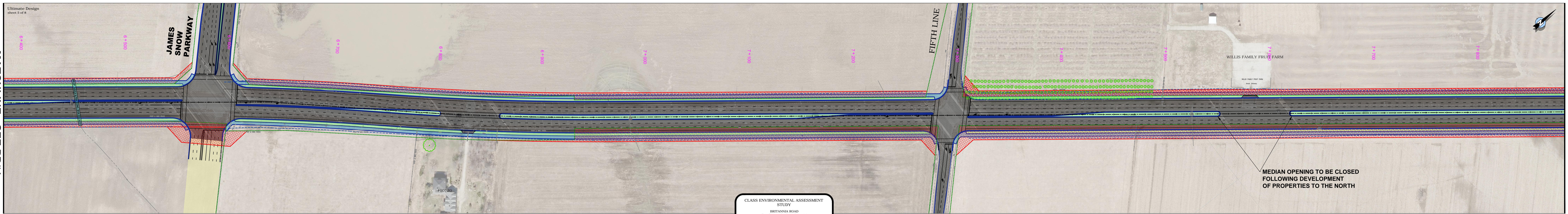
CLASS ENVIRONMENTAL ASSESSMENT STUDY
BRITANNIA ROAD
(From Tremaine Road to Highway 407)
Ultimate Design - Plan and Profile - PP#4
APRIL, 2014 sheet 4 of 8 SCALE: NTS



MATCHLINE - SEE PP#5

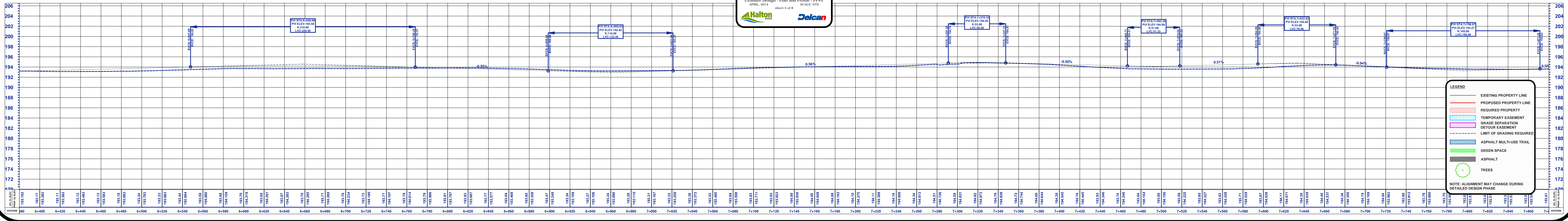
MATCHLINE - SEE PP#4

MATCHLINE - SEE PP#6



MEDIAN OPENING TO BE CLOSED FOLLOWING DEVELOPMENT OF PROPERTIES TO THE NORTH

CLASS ENVIRONMENTAL ASSESSMENT STUDY
BRITANNIA ROAD
(From Tremaine Road to Highway 407)
Ultimate Design - Plan and Profile - PP#5
APRIL, 2014 sheet 5 of 8
SCALE: NTS

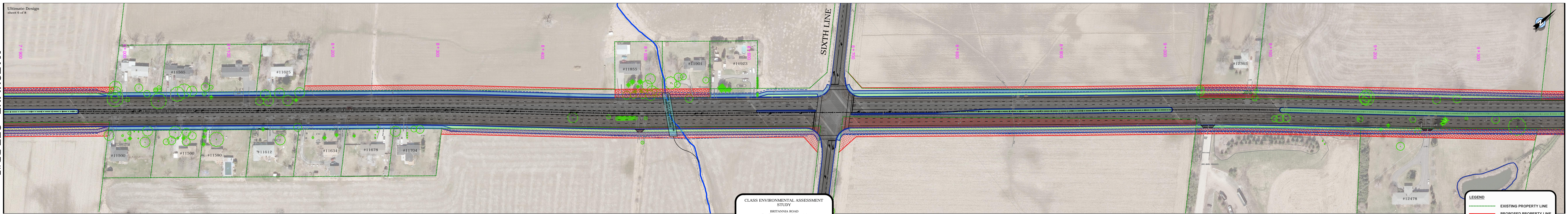


LEGEND

- EXISTING PROPERTY LINE
- PROPOSED PROPERTY LINE
- REQUIRED PROPERTY
- TEMPORARY EASEMENT
- GRADE SEPARATION
- DETOUR EASEMENT
- LIMIT OF GRADING REQUIRED
- ASPHALT MULTI-USE TRAIL
- GREEN SPACE
- ASPHALT
- TREES

NOTE: ALIGNMENT MAY CHANGE DURING DETAILED DESIGN PHASE

MATCHLINE - SEE PP#5



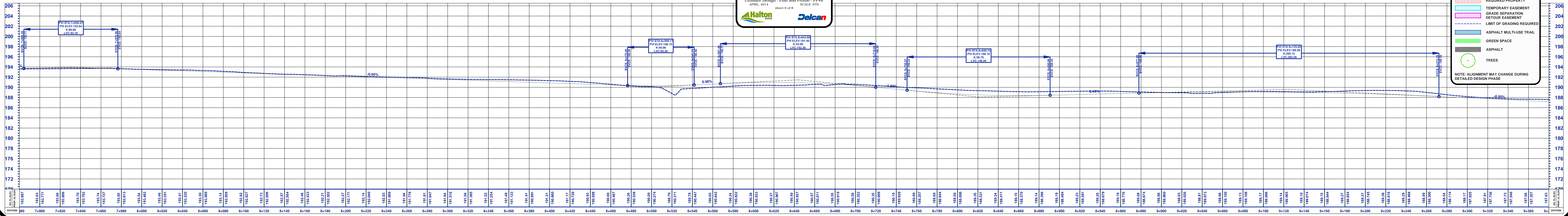
MATCHLINE - SEE PP#7

CLASS ENVIRONMENTAL ASSESSMENT STUDY
BRITANNIA ROAD
(From Tremaine Road to Highway 407)
Ultimate Design - Plan and Profile - PP#6
APRIL, 2014 sheet 6 of 8 SCALE: NTS

LEGEND

- EXISTING PROPERTY LINE
- PROPOSED PROPERTY LINE
- REQUIRED PROPERTY
- TEMPORARY EASEMENT
- GRADE SEPARATION
- DETOUR EASEMENT
- LIMIT OF GRADING REQUIRED
- ASPHALT MULTI-USE TRAIL
- GREEN SPACE
- ASPHALT
- TREES

NOTE: ALIGNMENT MAY CHANGE DURING DETAILED DESIGN PHASE

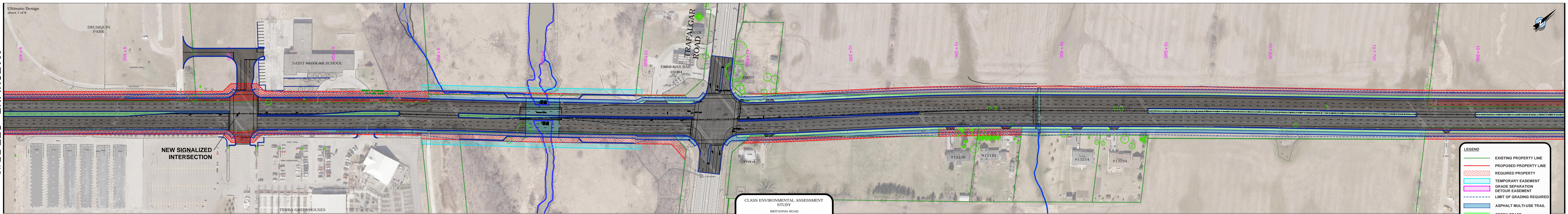


EX. ELEV.
PROP. ELEV.

EX. ELEV.
PROP. ELEV.

MATCHLINE - SEE PP#6

MATCHLINE - SEE PP#8



CLASS ENVIRONMENTAL ASSESSMENT STUDY

BRITANNIA ROAD
(From Tremaine Road to Highway 407)

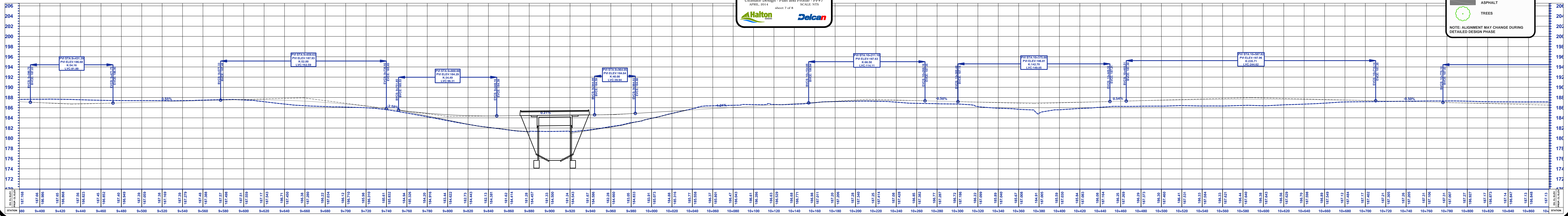
Ultimate Design - Plan and Profile - PP#7
APRIL, 2014 sheet 7 of 8 SCALE: NTS

Halton **Delcan**

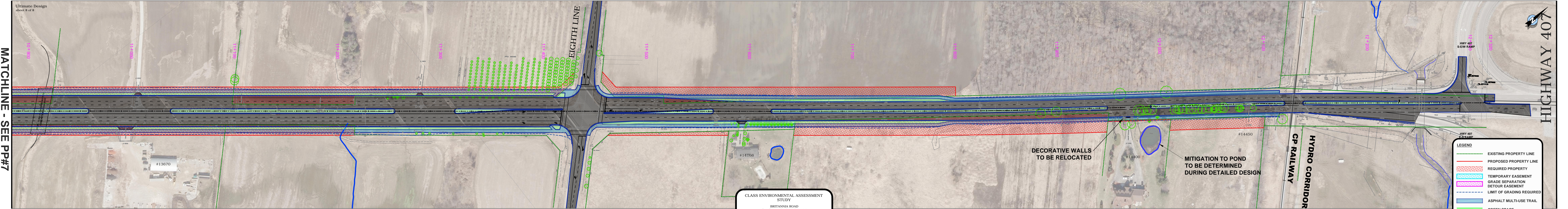
LEGEND

- EXISTING PROPERTY LINE
- PROPOSED PROPERTY LINE
- REQUIRED PROPERTY
- TEMPORARY EASEMENT
- GRADE SEPARATION
- DETOUR EASEMENT
- LIMIT OF GRADING REQUIRED
- ASPHALT MULTI-USE TRAIL
- GREEN SPACE
- ASPHALT
- TREES

NOTE: ALIGNMENT MAY CHANGE DURING DETAILED DESIGN PHASE



MATCHLINE - SEE PP#7



LEGEND

- EXISTING PROPERTY LINE
- PROPOSED PROPERTY LINE
- REQUIRED PROPERTY
- TEMPORARY EASEMENT
- GRADE SEPARATION
- DETOUR EASEMENT
- LIMIT OF GRADING REQUIRED
- ASPHALT MULTI-USE TRAIL
- GREEN SPACE
- ASPHALT
- TREES

NOTE: ALIGNMENT MAY CHANGE DURING DETAILED DESIGN PHASE

CLASS ENVIRONMENTAL ASSESSMENT STUDY
BRITANNIA ROAD
(From Tremaine Road to Highway 407)

Ultimate Design - Plan and Profile - PP#8
APRIL, 2014 sheet 8 of 8 SCALE: NTS

