

NOTICE OF STUDY COMMENCEMENT

MUNICIPAL CLASS ENVIRONMENTAL ASSESSMENT STUDY

Replacement, Rehabilitation or Relocation of the Aldershot Creek Wastewater Main
City of Burlington | Our File: PR-3404

Study

Halton Region is initiating a Municipal Class Environmental Assessment (MCEA) Study for the Aldershot Creek wastewater main in the City of Burlington. The existing wastewater main is located within the Aldershot Creek valley and is nearing the end of its useful life.

The MCEA Study will develop and evaluate a variety of relocation, replacement and/or rehabilitation alternatives that will consider the existing environment as well as public and stakeholder input.

Process

This notice signals the commencement of the MCEA Study, which will define the problem, identify and evaluate alternative solutions, and determine a preferred solution in consultation with the City of Burlington, regulatory agencies and the public. The MCEA Study is being conducted in compliance with Schedule B of the *Municipal Class Environmental Assessment* (October 2000, amended 2007, 2011 and 2015), which is approved under the Ontario *Environmental Assessment Act*.

Public and review agency consultation is a key element of the MCEA Study process and input will be sought throughout this study. Details regarding a future Public Information Centre (PIC) will be advertised as the MCEA Study progresses. Upon completion of the MCEA Study, a Project File Report (PFR) will be prepared and placed on the public record for a minimum 30-day review period. The PFR will detail the planning and consultation process and the preferred alternative.

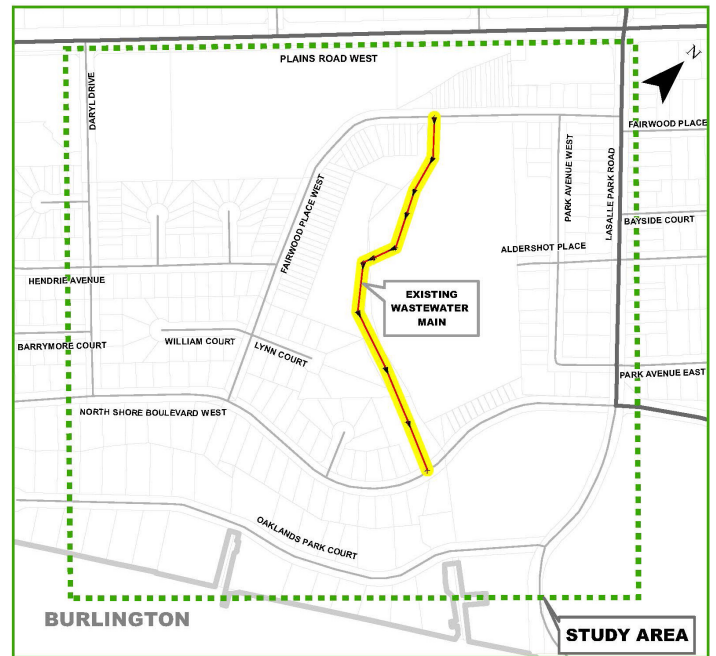
Comments

Comments received through the course of the Study will be considered and documented in the PFR. Additional information related to the MCEA Study and consultation process may be obtained through the project webpage at halton.ca.

Please contact either of the project team members listed below if you have questions or would like to provide comments on the Class EA Study:

Mark Bajor
Project Manager
Halton Region
1151 Bronte Road
Oakville, ON L6M 3L1
(905) 825-6000 ext. 7921
mark.bajor@halton.ca

Andrea LaPlante, P.Eng.
Project Manager
Associated Engineering (Ont.) Ltd.
Suite 300, 101 Lampman Court
Niagara-on-the-Lake, ON L0S 1J0
(289) 434-4804
laplantea@ae.ca



Information provided in response to this notice will be collected in accordance with the *Freedom of Information and Protection of Privacy Act*. With the exception of personal information, all comments will become part of the public records.

This Notice first issued March XX, 2022.